

# GOMBE L-PRES Chronicle

...Transforming livestock productivity, profitability and resilience for sustainable future

FEBRUARY, 2025



## The Success Stories of **GOMBE L-PRES** **PROJECT**

- Gov Inuwa Leads 2024 Annual Livestock Vaccination Campaign ... Pg. 35
- Gombe L-PRES Unveils 41-Hectare Site Plan for International Livestock Market ... Pg. 37
- Gombe L-PRES Opens Bid For Ultra-Modern Abattoir, Assures Of Fair Play Pg. 38

Partners:



GOMBE STATE



THE WORLD BANK  
IBRD • IDA | WORLD BANK GROUP

# EDITOR'S NOTE

**W**elcome to the inaugural edition of Gombe L-PRES Chronicle—a compelling record of transformation, innovation, and resilience in Gombe State's livestock sector under the visionary leadership of His Excellency, Governor Muhammadu Inuwa Yahaya, CON.

Through these pages, we highlight the remarkable strides made by the Livestock Productivity and Resilience Support (L-PRES) Project, expertly coordinated by Prof. Usman Bello Abubakar. From modernizing grazing reserves and enhancing animal health services to improving dairy and meat production, L-PRES is reshaping livestock farming and unlocking new economic opportunities.

This edition captures key projects, engagements, capacity-building workshops, policy interventions, and success stories from Q4 2023 to date, while also offering insights into the 2025 action plan for further sectoral growth.

Beyond digesting achievements, Gombe L-PRES Chronicle serves as a platform to inform, engage, and inspire stakeholders. It is both a testament to progress and a call for sustained collaboration in ensuring the project's long-term success.

We invite you to immerse yourself in this edition, rich with captivating narratives and vivid pictorials. Enjoy the read!

**Adamu Abubakar Kumo**  
Special Assistant to Gombe State Governor on Media  
Editor/Production Coordinator  
Gombe L-PRES Chronicle

## Editorial Team



**Prof. U.B. Abubakar**  
Gombe L-PRES Coordinator  
Editor-in-Chief



**Ismaila Uba Misilli**  
DG, Press Affairs  
Government House, Gombe  
Editorial Adviser



**Adamu A. Kumo**  
SA. to State Governor on Media  
Editor/Prod. Coordinator



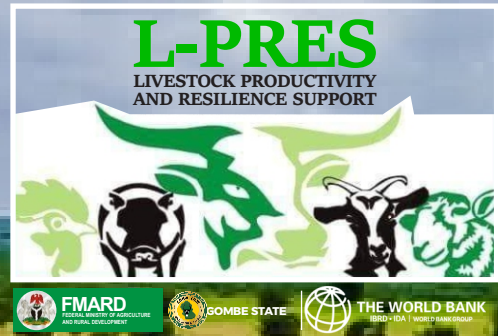
**Yunusa Isa Kumo**  
Member Editorial Board



**Sa'eed Ahmad Bappah**  
Member Editorial Board



**Imrana S. Maikanti**  
Member Editorial Board



# OVERVIEW OF THE GOMBE L-PRES PROJECT

The Livestock Productivity and Resilience Support (L-PRES) Project is a World Bank supported transformative initiative aimed at enhancing livestock productivity and strengthening the resilience of pastoral communities in Nigeria. L-PRES is currently being implemented in 20 states, with Gombe State being one of the key beneficiaries.

Gombe State officially joined the L-PRES Project in October 2023, with actual implementation commencing in December 2023 following the release of funds.

Since implementation began, the state has made substantial progress in improving livestock productivity, disease control, and value chain development, benefiting thousands of farmers across the state.

**Components:**

The Gombe L-PRES Project is structured around five key components:

- (i) Institutional and Innovation System Strengthening
- (ii) Livestock Value Chain Enhancement
- (iii) Crisis Prevention and Conflict Mitigation
- (iv) Project Coordination and Management
- (v) Contingency Emergency Response

OBJECTIVES	COVERAGE/SCOPE	PROJECT TARGET POPULATION /BENEFICIARIES
<p>The Project Development Objective (PDO) is to improve livestock productivity, resilience, and commercialisation of selected livestock value chains while strengthening the state's capacity to respond to eligible crises or emergencies.</p>	<p>Strengthening sector institutions, disease control and prevention, enhancing livestock value chains, and mitigating climate change mediated conflicts.</p>	<p>The project is expected to directly benefit 1.43 million individuals in the whole country (of which at least 30 percent will be women), including livestock producers, pastoral and sedentary farm households and smallholder producers and other value chain actors.</p>

# LEADERSHIP AND VISION

## Gombe's Livestock Renaissance: A Vision of Transformation, Productivity, and Resilience Under Governor Inuwa

Gombe State is predominantly an agrarian state, with over 70% of the population engaged in agriculture and our administration recognises the livestock sub-sector as a cornerstone of its economic foundation. We also understand the strategic importance of this sector—not only for food security and economic empowerment but also for fostering peaceful coexistence between farmers and pastoralists.

Since taking office, we have prioritised the transformation of livestock production in Gombe State through policies and programmes designed to enhance productivity, profitability, sustainability, and resilience. Our commitment to the L-PRES Project reflects our broader vision of modernising livestock, generating wealth, and improving livelihoods for livestock farmers and value chain actors across the state.

This commitment is evident in our active participation in L-PRES, the National Livestock Transformation Plan (NLTP), and other initiatives aimed at supporting pastoralists, livestock farmers, and value chain actors. These efforts are backed by strategic policies, counterpart funding, infrastructure development, and international partnerships.

To build a sustainable and profitable livestock industry, we have engaged international partners. In June 2024, I led a delegation to Morocco to explore a public-private partnership with COPAG Bladna, a leading dairy and agro-industrial firm, to establish a modern dairy industry in Gombe State.

Our goal is to replicate COPAG's success by developing dairy cooperative societies, milk collection

centres, and processing factory that will produce dairy products such as flavoured milk, butter, cheese, and yoghurt. This initiative will create job



His Excellency,  
**Muhammadu Inuwa Yahaya, CON**  
Executive Governor, Gombe State

opportunities, stimulate the local economy, and strengthen our dairy sector.

Additionally, the 1,000-hectare Muhammadu Buhari Industrial Park in Dadinkowa is set to attract processing industries, thereby enhancing livestock and agro-industrial activities, creating value addition, and opening export opportunities.

For five consecutive years, we have successfully vaccinated millions of livestock against Contagious Bovine Pleuropneumonia (CBPP), Peste des Petits Ruminants (PPR), and anthrax-diseases that have historically hampered productivity and posed significant public health risks.

In addressing the long-standing challenge of farmer-herder conflicts, we have taken the following actions:

- Reconstituted the Farmers/Herders Prevention and

Settlement of Disputes Committee to facilitate peaceful coexistence.

- Established Task Force on Grazing Reserves and Cattle Routes to reclaim encroached and illegally occupied lands.
- Prioritised the re-demarcation of grazing reserves and cattle routes, including the establishment of control posts at key border areas.

The L-PRES cardinal objectives of improving livestock productivity, resilience and commercialization of selected value chains, align perfectly with our vision, policies, and programmes, which aim to address the broader socio-economic challenges of our people.

Our Gombe State Development Plan (2021-2030) provides a strategic roadmap for the agricultural sector, focusing on livestock resilience, sustainable food security, and economic diversification.

The establishment of modern livestock facilities, enhanced veterinary services, and international collaborations underscores our commitment to transforming the sector.

Furthermore, we commend President Bola Ahmed Tinubu for establishing the Federal Ministry of Livestock Development, a move that reinforces the national agenda for a sustainable and thriving livestock industry.

I urge traditional rulers, community leaders, livestock cooperatives, investors, and development partners to support these initiatives. The livestock sector holds immense economic potential, and together, we can build a sustainable, modern, and prosperous industry in Gombe State.

## L-PRES: Preserving Heritage, Modernising Livelihoods—

### A Royal Endorsement from the Emir of Gombe

**H**is Royal Highness, the Emir of Gombe, Alh. Dr. Abubakar Shehu Abubakar III, CFR affirms the Gombe State L-PRES Project as a transformative initiative safeguarding and modernising one of the most fundamental pillars of Gombe's economy—livestock production.

During his visit to the proposed site for the International Livestock Market and Ultramodern Abattoir, alongside the Gombe L-PRES Coordinator, Professor Usman Bello Abubakar, the Emir emphasized the historical significance of livestock rearing in Gombe.

Rooted in centuries-old traditions and passed down through generations, livestock remains a major source of livelihood for the people, embodying the wisdom of

Shaikh Uthman bin Fodiyo's maxim: "Ndure, Ndeme, Njange"—Rear livestock, farm crops, and seek knowledge.

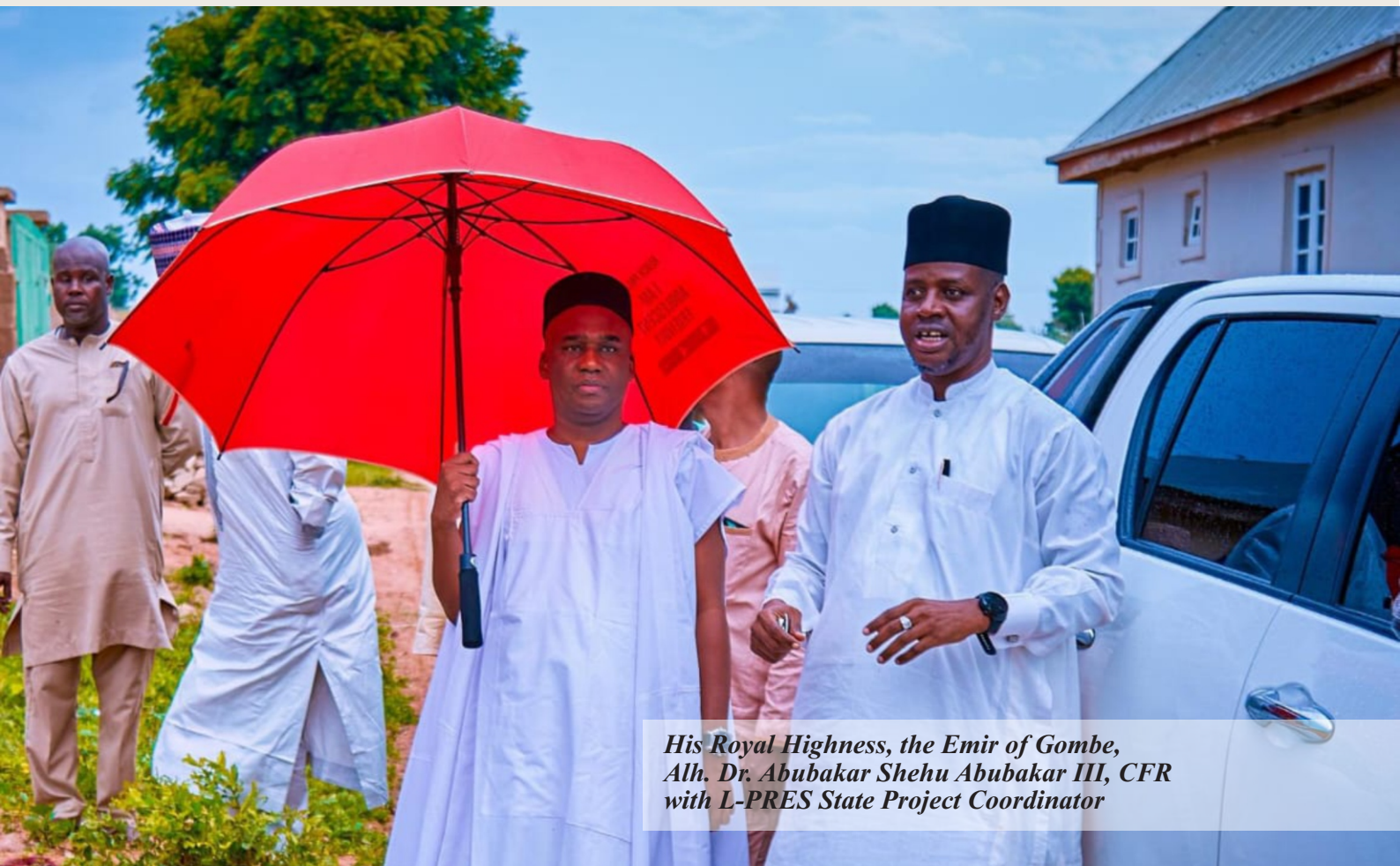
Symbolized in the official Gombe State emblem, where the head of a cow signifies the deep cultural and economic value of livestock, this sector has long been the backbone of the state's rural economy.

The Emir, himself a dedicated farmer, lauded Governor Muhammadu Inuwa Yahaya's commitment to revitalizing the livestock industry through L-PRES, ensuring that traditional pastoral livelihoods are not only preserved but modernized to meet the demands of a growing economy.

With strategic interventions such as improved grazing reserves, sustainable water supply, veterinary services, and market expansion, L-PRES is paving the way for a prosperous future—where heritage meets innovation to uplift the lives of the entire people of Gombe State.



His Royal Highness,  
Alh. Dr. Abubakar Shehu Abubakar III, CFR  
Emir of Gombe



His Royal Highness, the Emir of Gombe,  
Alh. Dr. Abubakar Shehu Abubakar III, CFR  
with L-PRES State Project Coordinator

...Transforming livestock productivity, profitability and resilience for sustainable future

## GOVERNOR INUWA: THE CHAMPION OF LIVESTOCK REVOLUTION IN GOMBE STATE

**Notes from the Honourable Commissioner, Ministry of Agriculture, Animal Husbandry, and Cooperatives**

Spotlighting Governor Inuwa Yahaya as a Champion of Agricultural Transformation I have never seen a leader as passionate about agriculture as His Excellency, Governor Muhammadu Inuwa Yahaya.

His commitment to farming and livestock development is unparalleled. Since assuming office, not a single year has passed without his administration procuring vaccines to safeguard livestock from diseases - particularly zoonotic diseases that can be transmitted to humans. His foresight and proactive approach have ensured that Gombe remains well-prepared, even in the face of outbreaks like anthrax, which has caused panic in other states.

One of the key achievements of the Governor's administration is the significant upgrade of veterinary facilities. Through the intervention of the Livestock Productivity and Resilience Support (L-PRES) Project, veterinary clinics have been upgraded to full-fledged veterinary hospitals, further strengthening animal healthcare services in the state.

Additionally, in a move set to revolutionise livestock trade and meat processing in the region, the state government is set to construct a brand-new international cattle market and modern abattoir along Bajoga Road. This landmark project is expected to enhance livestock commerce, improve hygiene in meat processing, and boost economic activities in the state.

Another notable initiative by Governor Yahaya was the recovery of a cold chain vehicle, which was previously sold off by self-serving individuals. This vehicle, initially procured for the safe distribution of

livestock vaccines, will soon be repurposed and allocated to committed individuals for business operations that align with the state's agricultural development goals.



**Dr Barnabas M. Malle**  
Honourable Commissioner, Ministry of Agriculture,  
Animal Husbandry, and Cooperatives

His Excellency has been instrumental in supporting projects that promote livestock productivity and food security. L-PRES, for example, has greatly improved water availability for pastoralists by facilitating borehole installations and water provision from Kupto to Wawa-Zange. Plans are also underway to develop canals in Wawa-Zange, further supporting livestock rearing during the dry season.

L-PRES has executed world-class projects with the full backing of His Excellency. Under his leadership, the project has successfully constructed veterinary laboratories, enhanced livestock healthcare services, and introduced modern farming techniques to improve productivity. Many more groundbreaking initiatives are in the pipeline, promising even greater

transformation in the near future.

Governor Yahaya has also given L-PRES leadership the autonomy to implement all World Bank-supported agricultural initiatives, ensuring that the state maximises the benefits of these international interventions for long-term agricultural sustainability.

Recognising the critical role of peaceful coexistence between farmers and herders, Dr Malle made a heartfelt appeal for unity, highlighting Governor Yahaya's proactive steps in addressing conflicts.

His Excellency has established two committees dedicated to fostering peaceful relationships between farmers and herders. The Governor has provided an enabling environment for both parties to thrive without conflict. It is now our collective responsibility to embrace peace and work together for the greater good of Gombe State.

The Governor's passion for agriculture extends beyond policies and projects. He personally led a delegation to the Kingdom of Morocco, where we witnessed first-hand innovative agricultural practices that will shape the future of Gombe's farming sector. The knowledge and experiences gained from that visit will undoubtedly be harnessed to improve our local agricultural landscape.

With Governor Muhammadu Inuwa Yahaya at the helm, Gombe State is set to become a model of agricultural excellence in Nigeria. His vision, dedication, and policies are paving the way for food security, economic empowerment, and a sustainable future for generations to come.

## THE PROFILE OF GOMBE L-PRES COORDINATOR Professor U.B. Abubakar: A Distinguished Leader in Veterinary Medicine



**Professor Usman Bello Abubakar, FCVSN  
Gombe L-PRES Coordinator**

**P**rofessor Usman Bello Abubakar was born on 22nd January 1970 in Tongo, Funakaye Local Government Area of Gombe State. He is a highly respected figure in the field of veterinary medicine. Professor U. B. Abubakar's journey to excellence has been marked by a strong work ethic and dedication to continuous learning. He possesses diverse experience in academia, public service, and community leadership, coupled with extensive knowledge, skills, and expertise.

### **Educational Qualifications**

Professor Abubakar possesses a strong academic foundation with a distinguished record of achievements. He earned his Doctor of Veterinary Medicine (DVM) from the University of Maiduguri, Borno

State, in 2005 and furthered his studies at Ahmadu Bello University, Zaria, where he obtained a Master of Science (MSc) Degree in Large Animal Medicine in 2010. Abubakar continued his academic pursuits at the same institution, culminating in the award of a Doctor of Philosophy (PhD) in Large Animal Medicine in 2016.

Recognising his exceptional contributions to the field, he was awarded the prestigious Fellowship of the College of Veterinary Surgeons of Nigeria (FCVSN) in Large Animal Medicine by the Veterinary Council of Nigeria, Abuja, in 2021.

### **Professional/Working Experience**

Professor Abubakar boasts a distinguished career spanning over three decades, encompassing both

public service and academia. He began his professional journey in 1991 as a Livestock Assistant at the Bauchi State Ministry of Agriculture, Veterinary and Livestock Services. He subsequently joined the Gombe State Ministry of Agriculture, Veterinary and Livestock Services, where he progressed through the ranks as an Assistant Chief Livestock Overseer from 1994 to 1997, Chief Livestock Overseer from 1997 to 2003, Livestock Superintendent from 2003 to 2006, and Veterinary Officer from 2006 to 2007.

In 2007, Professor Abubakar embarked on an academic career at Ahmadu Bello University, Zaria, joining the Department of Veterinary Medicine as an Assistant Lecturer. He steadily progressed through the academic ranks, attaining the position of Lecturer II from 2010 to 2013, Lecturer I from 2013 to 2016, Senior Lecturer from 2016 to 2019, and finally Professor in 2022.

Beyond his academic pursuits, Professor Abubakar has actively engaged in various research and development projects. He served as a Technical Team Member for the Centre of Excellence on Tuberculosis, Rabies and Brucellosis at ABU, a project funded by the World Bank through the Science and Technology Education Post Basic (STEP-B) programmes.

He has also led several significant initiatives, including the Water Canalisation Project into the Wawa-Zange Grazing Reserve, a crucial component of the Feed the Future Nigerian Rural Resilience Activity (RRA) funded by USAID and implemented by a consortium led by Mercy Corps. He also led the development of Livestock Investible Business Cases in the Wawa-Zange Grazing Reserve under the same USAID-funded RRA programmes.

Currently, Professor Abubakar serves as the State Coordinator for the Gombe State Livestock Productivity and Resilience Support (L-PRES)

Project, playing a pivotal role in driving the transformation of the livestock sector in Gombe State.

Professor Abubakar has a dedicated passion for teaching veterinary medicine. Throughout his tenure at Ahmadu Bello University, Zaria, he has instructed a wide range of undergraduate and postgraduate courses. His undergraduate teaching responsibilities have encompassed subjects such as Large Animal Practice, Ambulatory Practice, Clinical Conference, Bacterial Diseases, Viral Diseases, Clinical Techniques, Principles of Medicine (Cattle), Introduction to Animal Behaviour, and Animal Handling (Cattle). At the postgraduate level, he has taught courses including Topics in Infectious Diseases, Advanced Clinics, Advanced Monogastric Internal Medicine, Advanced Herd Health Management, and Advanced Clinical Gastroenterology. Professor Abubakar is a dedicated mentor to his students, providing guidance and support throughout their academic journey.

### **Professional Development**

Professor Abubakar is committed to continuous professional development. He has actively engaged in numerous professional development activities throughout his career. He has presented his research at esteemed international conferences, such as the 18th Union Conference of the African Region for the International Union Against Tuberculosis and Lung Disease in Abuja in 2011, and the 16th International Congress on Infectious Diseases in Cape Town, South Africa in 2014.

Professor Abubakar actively engages with professional societies, regularly attending their annual conferences. He has participated in the 51st Annual Conference of the Agricultural Society of Nigeria in Abuja in 2017, the 6th International Conference on Rabies in West Africa in Abuja in 2019, and the 46th and 47th Annual Conferences of the Nigerian Society for Animal Production, hosted by Federal University Dutsin-Ma in

2021 and the University of Jos in 2022.

He has also participated in a diverse range of training programmes, including the Training on Climate Smart Animal Husbandry Practices for Increased Productivity at the National Animal Production Research Institute, ABU, Zaria in 2013, the Training Workshop on Fish, Poultry and Livestock Feed Formulation Using Local Raw Materials in Nigeria at the College of Agriculture and Animal Science Mando, Kaduna State in 2014, and the Training Workshop on Reducing Livestock Production Losses in Nigeria at the National Animal Production Research Institute, ABU, Zaria in 2017.

Other training programmes include the Training Workshop on Poultry Production, Housing, Feeding, and Vaccination at the National Animal Production Research Institute, ABU, Zaria in 2018, the Training Workshop on Livestock Value Chain organised by Alar Denmack, Institute of Agricultural Research in 2021, the Virtual Training on Livestock Transformation Plan organised by NLTP Abuja in 2022, the Three-Day Workshop on Climate Change Awareness and Adaptation, Alternative Energy and Energy Efficiency conducted by the North East Development Commission in 2022, and the Training Workshop on Scaling up Sustainable Livestock Businesses and Coordination at the Business School, Ahmadu Bello University, Zaria in 2023.

### **Research Focus, Publications, and Articles**

Professor Abubakar has a distinguished publication record, with over 60 articles published in peer-reviewed journals and books. His research interests encompass a broad spectrum, spanning poultry production, animal diseases, and public health.

Early in his career, Professor Abubakar focused on poultry production, investigating factors limiting commercial poultry

production in Gombe Metropolis. Subsequently, his research shifted towards tuberculosis in livestock. He has conducted extensive research on the prevalence of bovine tuberculosis in various species, including cattle, camels, and goats, across different regions of Nigeria. His research methodologies are diverse, encompassing post-mortem examinations, serological tests, and molecular techniques. Notably, his research has significantly advanced our understanding of tuberculosis transmission, including zoonotic transmission between humans and cattle.

His research findings have been published in numerous prestigious international and national journals, including the Nigerian Veterinary Journal, Veterinary Research, Journal of Camel Research and Practice, British Journal of Medicine and Medical Research, International Journal of Tropical Medicine, and many others. These publications have contributed significantly to veterinary knowledge and have informed public health interventions for controlling tuberculosis in Nigeria.

### **Awards and Recognition**

Professor Abubakar's distinguished career has been recognised through several prestigious awards and grants. He received the 2010 Innovation of Tomorrow Research Grant from the Science and Technology Education Post Basic (STEP-B) programme, funded by the World Bank and administered by the Federal Ministry of Education. He also played a key role in establishing the Centre of Excellence on Tuberculosis, Rabies and Brucellosis at ABU, another initiative supported by the STEP-B programme.

His contributions have been acknowledged by his peers, including the Outstanding ARD Award presented by the Association of Resident Doctors of Ahmadu Bello University Teaching Hospital, Shika-Zaria, Kaduna State, in 2015, in recognition of his notable contributions to the ideals of the association.

His research endeavours have also received significant recognition. He was awarded the Agricultural Research Council Research Competitive Grant for his project on the “Epidemiology of Mycobacterium bovis Infection in Animals and Humans in the North-East Region of Nigeria” (2010–2012). Additionally, he received the Tertiary Education Trust Fund (TETFund) National Research Competitive Grant Award for his project on the “Epidemiology of Mycobacterium bovis Infection in Cattle and Humans in the North-West Region of Nigeria” (2013–present).

In recognition of his exceptional service as National Vice-President of the Nigerian Infectious Diseases Society from 2015 to 2019, he was honoured with the Outstanding Service Award by the society.

#### **Leadership and Community Service**

Professor Abubakar is a strong

advocate for public service and actively engages in initiatives that promote animal health awareness and empower local communities. He serves as a member of the Poultry Production Awareness Committee at both national and state levels and leads the Gombe State Livestock Transformation Management Project Committee. Within his faculty, he actively engages in educating farmers on Bovine Tuberculosis Prevention and Control.

Beyond his professional endeavours, Professor Abubakar demonstrates a strong commitment to his university community. He has served on numerous committees, including the Ahmadu Bello University Committee on HIV/AIDS Awareness and the University Senate. He has also held leadership positions within the Academic Staff Union of Universities (ASUU), demonstrating his dedication to advocating for the rights and welfare of his colleagues.

#### **Career Goals and Aspirations**

Professor Abubakar is a highly motivated and results-oriented professional with a strong work ethic. He strives for excellence in all his endeavours, consistently meeting deadlines and exceeding expectations. He thrives in dynamic environments, effectively managing work under pressure while readily adapting to new challenges. As a strong team player, he leverages his analytical and problem-solving skills to contribute effectively in collaborative settings. He is proactive and self-motivated, consistently striving to achieve his professional goals.

His passion for veterinary medicine, agricultural development, and livestock transformation continues to drive his contributions to Gombe State and Nigeria as a whole. His leadership at Gombe L-PRES stands as a testament to his dedication to improving livestock productivity, resilience, and sustainability in the country.

## **KEY ACHIEVEMENTS AND INTERVENTIONS**

### **The Synopsis of Gombe L-PRES' Remarkable Progress Under Prof. U.B. Abubakar**

**G**ombe State has emerged as a leading force among the 22 states participating in the Livestock Productivity and Resilience Support (L-PRES) Project, a transformative initiative jointly funded by the World Bank, Gombe State Government, and the Federal Government of Nigeria. This ambitious project is designed to revolutionise the livestock sector while simultaneously strengthening resilience within pastoral communities.

All thanks to His Excellency, Governor Muhammadu Inuwa Yahaya's unwavering commitment to excellence, which led to the appointment of a seasoned academic and expert in Veterinary Productive Medicine, Professor Usman Bello Abubakar, as the Team Lead and Gombe State L-PRES Coordinator. Under Prof. Abubakar's leadership, Gombe has achieved significant strides since joining the project in

October 2023 and commencing full implementation in December of the same year.

Within just one year of implementation, Gombe L-PRES has positioned the state as a leader in livestock transformation, achieving milestones in infrastructure, veterinary services, stakeholder empowerment, and market expansion.

#### **Modernising Livestock Infrastructure**

A critical focus of Gombe L-PRES has been to address the dilapidated state of livestock infrastructure in the state. Prior to the project's intervention, many livestock markets and abattoirs were in a state of disrepair, characterised by unhygienic conditions that significantly impeded productivity, profitability, and economic growth. Recognising the urgent need for improvement, the project prioritised

the rehabilitation and development of essential infrastructure to enhance productivity and support value chain actors.

Significant improvements have been made in key livestock markets across Gombe State, enhancing commercial activities and service delivery. Three livestock markets in Bajoga (Funakaye LGA), Kashere (Akko LGA), and Lalaipido (Shongom LGA) have been modernised with the addition of new stalls, administrative offices, toilets, loading bays, and solar-powered boreholes. Veterinary offices have also been established within the Bajoga and Kashere markets to provide essential veterinary services to livestock. Furthermore, a major gully erosion control project, covering over 200 metres, was implemented at the Lalaipido livestock market. The project has also focused on improving livebird markets across the state. The construction of six livebird



Renovated Kumo Abattoir

markets commenced, with projects in Kurugu (Kwami LGA), Kwadon (Yamaltu Deba LGA), and Talasse (Balanga LGA) already completed. Construction is currently ongoing in Bajoga, Kumo, and Dukku.

Additionally, three veterinary clinics were renovated, with projects in Gombe and Dukku completed, while renovation is ongoing at the Kaltungo clinic. In Gombe, a well-furnished veterinary diagnostic laboratory, equipped with reagents and equipment, was established alongside the veterinary clinic to enhance service delivery.

The project has also undertaken the rehabilitation of critical abattoir infrastructure. Three slaughter slabs/abattoirs were renovated, including the Gombe Main Abattoir, Kumo, and Bajoga. These facilities underwent significant renovations, including the reconstruction of main structures and toilets, among other improvements. These upgrades, including improved drainage systems for waste disposal, have not only enhanced hygienic practices but have also provided crucial support to value chain actors in the meat industry.

### Enhancing Water Access and Supply

Access to clean and reliable water sources is essential for livestock health and productivity. To address this, the Gombe L-PRES Project has constructed 63 new solar-powered boreholes and rehabilitated 33 existing ones, providing sustainable water access to communities. This has significantly improved access to

clean water for livestock in locations such as Gwalfade in Yamaltu Deba LGA and Kobbe in Balanga LGA. Furthermore, three earth dams were rehabilitated, including one in the Wawa-Zange Grazing Reserve in Dukku LGA and two in Siddikiwo and Kerengi in Funakaye LGA, ensuring year-round water availability for livestock.

### Strengthening Veterinary Services and Animal Health

To improve veterinary healthcare, the Gombe Veterinary Clinic is being upgraded into a full-fledged hospital, complemented by renovations in Dukku and Kaltungo. In addition, to enhance health security, 45 One-Health officers were trained, and the 2024 Annual Livestock Vaccination Campaign was flagged off, targeting major livestock diseases. These efforts are geared towards safeguarding animal health,



Facilities inside the newly established cold chain facility

improving resilience, and boosting productivity.

### Empowering Stakeholders Through Training and Capacity Building

Gombe L-PRES has prioritised capacity building to equip stakeholders with the skills and knowledge necessary for sustainable livestock management. Over 300 butchers and meat processors were trained in hygienic meat handling practices, while 168 farmers received training on financial management and cooperative governance. Livestock farmers were sensitised on breeding techniques and artificial insemination, enhancing productivity

and profitability. Furthermore, the project conducted extensive training for Community Livestock Service Providers and livestock extension workers across the 11 LGAs, strengthening technical expertise at the grassroots level.

### Fostering Peace, Addressing Conflicts, and Promoting Environmental Sustainability

To tackle the long-standing issue of farmer-herder conflicts, Gombe L-PRES has taken proactive measures to promote peaceful coexistence. Eleven operational mediation platforms were established for conflict resolution, while security meetings in conflict-prone areas such as Yamaltu Deba LGA were convened to address tensions. Stakeholders were trained on conflict resolution and peace-building strategies, creating a harmonious environment for pastoralists and farmers to thrive.

The Gombe L-PRES Project has also prioritised environmental sustainability and climate change mitigation as integral components of its interventions. To combat the impacts of climate change and promote sustainable livestock practices, the project has distributed 20 different varieties of fodder seeds, totaling 800kg, along with over 20,000 seedlings to livestock farmers. This initiative aims to ensure a steady supply of feed while

simultaneously restoring degraded landscapes.

### Strengthening Value Chains and Market Access

The project has significantly enhanced livestock value chains, driving economic growth and reducing poverty. Livestock value chain actors across 11 LGAs were profiled, identifying gaps and opportunities for targeted interventions. Training on market information access and market-oriented negotiation skills equipped farmers with tools to secure better deals. Furthermore, the distribution of essential inputs and resources bolstered operations within the

livestock value chains, ensuring efficiency and sustainability.

### Flagship Projects and Future Prospects

One of the flagship initiatives of Gombe L-PRES is the planned 41-hectare ultra-modern abattoir, international livestock market, and beef, ram, and goat fattening hub-the first of its kind in northern Nigeria. This ambitious project is in its advanced preparatory stage, with the site plan unveiled and bids submitted for the contract. Once completed, it will include dedicated markets for cattle, sheep, goats, and poultry, alongside fattening hubs for beef, rams, and goats.

The ultra-modern abattoir, spanning 4 hectares, will feature state-of-the-art facilities such as a water supply system, cooling and storage units, a hide and skin tannery, and a leather processing unit.

The larger complex will house essential facilities, including a loading bay, veterinary clinic, quarantine zone, stock feed market, and a waste treatment plant. Security and accessibility will be bolstered with provisions for a fire station, police station, motel, bank, and

administrative offices. The site will also integrate digital technology for online livestock marketing and trade, complemented by a dedicated radio station to amplify opportunities locally and internationally.

### Artificial Insemination and Cooperative Development

Another key achievement of the Gombe L-PRES Project is the successful commencement of an Artificial Insemination Programme targeting over a thousand local cows. This initiative aims to improve livestock productivity and profitability. The programme will not only enhance milk production but also serve as a practical demonstration for local livestock

will be producing high-quality milk, which will be collected to supply the proposed milk processing factory. This initiative, facilitated by the 55 farmer cooperatives established, registered, and trained by L-PRES, aims to improve livestock productivity, profitability, and generate employment opportunities within the dairy sector.

### Conclusion

Under the visionary leadership of Professor Usman Bello Abubakar, Gombe L-PRES has emerged as a trailblazer in livestock productivity and resilience. From modernising infrastructure and ensuring water access to building stakeholder capacity and fostering environmental sustainability, the project has touched every aspect of the livestock sector in Gombe State.

Its achievements within a year of implementation underscore the transformative power of effective leadership and strategic planning. As Gombe L-PRES continues to deliver on its objectives, it sets a high standard for livestock development initiatives across Nigeria.



Scene from the ongoing free Artificial Insemination exercise conducted by L-PRES

farmers, showcasing the benefits of modern breeding techniques.

Subsequently, the crossbred cows

## MODERNISATION OF LIVESTOCK INFRASTRUCTURE

### Gombe L-PRES Rehabilitates Gombe, Kumo, And Bajoga Abattoirs

In its effort to provide a healthy and suitable working environment for butchers in Gombe State, the L-PRES Project has rehabilitated three abattoirs located in Bajoga, Kumo and Gombe Metropolis.

Some of the renovations at the Gombe abattoir included the main slaughter slab, toilets, roofing of the goat slaughter slab, and drainage lines for water and waste disposal.

The Kumo Town abattoir also underwent major rehabilitation, including the waste drainage system, construction of new male and female

toilets, terrazzo flooring of the slaughter slab, and general refurbishment of the slaughterhouse. Similarly, the Bajoga abattoir

received a facelift, including renovation of the main slaughter slab, roofing, and the construction of an access road linking the main road.

In a related development, the L-PRES Project has constructed incinerators in all the three abattoirs to



Renovated Gombe Abattoir

enhance waste disposal processes. According to the State Project Coordinator, Professor Usman Bello

Abubakar this intervention aims to promote healthy processing and handling of beef and other livestock

products, restoring the dilapidated facilities after decades of neglect.

### Governor Inuwa Yahaya Commissions Renovated Kumo Abattoir, As L-PRES Hands Over Solar-Powered Borehole To Community



Dr Barnabas Malle, commissioning the renovated Kumo Abattoir on behalf of the Gombe State Governor

**G**ombe State Governor, Alhaji Muhammadu Inuwa Yahaya, has enjoined butchers in Kumo, the headquarters of Akko LGA, to work together to enable them benefit from government policies and programmes.

The Governor made this call at the formal re-opening ceremony of the renovated Kumo slaughter slab, undertaken by the Gombe L-PRES Project.

Represented by the Commissioner for Agriculture, Animal Husbandry, and Cooperatives, Dr Barnabas Malle, the Governor expressed appreciation to the butchers' union and the local community for their support and cooperation throughout the renovation period. He urged them to make good use of the facility and maintain proper hygiene and sanitation.

Dr Malle noted that, so far, three slaughter slabs have been rehabilitated in the state under the L-PRES Project, as part of the government's efforts to reposition the livestock sector and create job

opportunities for youth.

He explained that the establishment of the L-PRES Project, with support from the World Bank, aligns with the Gombe State Livestock Development Plan, aimed at fully transforming the industry into a model.

He commended the L-PRES Project Coordinator for implementing valuable interventions with direct impacts on the lives of ordinary citizens.

Earlier in his remarks, the Gombe State L-PRES Project Coordinator, Professor Usman Bello Abubakar stated that the intervention aimed to provide a conducive working environment for butchers and meat sellers, helping them improve their businesses, increase profits, and generate employment among youth in the livestock value chain.

He urged the leadership of the butchers' union to maintain high standards of personal hygiene and a healthy environment, making their business more attractive to customers. He also called on them to

support the vision of Governor Muhammadu Inuwa Yahaya in delivering dividends of democracy to the people of the state.

Professor Abubakar further disclosed that the L-PRES Project has embarked on life-changing interventions in various communities across the state. Among these is the construction of a solar-powered borehole with two overhead tanks and a livestock drinking point, which has been completed and handed over to Tafare

community of Kumo West in Akko Local Government Area.

This community previously suffered from acute water scarcity, forcing residents to trek several kilometres daily in search of drinking water while livestock had to move long distances due to the absence of water ponds and streams in the area.

Delivering vote of thanks on behalf of the project beneficiaries, the Chairman of Akko LGA, Honourable Muhammad Danladi Adamu expressed satisfaction and appreciation to the state government and the L-PRES Project for implementing these projects in the most needed locations.

The Chairman urged the beneficiaries to unite as a family to ensure that the facilities are properly maintained and protected from misuse and vandalism. He emphasised that both the state government and L-PRES have played their roles, and it is now the responsibility of the benefiting communities to ensure sustainability.

## Gombe State Modernises 9 Livestock Markets To Drive Economic Growth ...As Gombe L-PRES Coordinator Hands Over Construction Sites To Contractors



Renovated Kashere Livestock and Livebirds Market

The Gombe State Government, through the Livestock Productivity and Resilience Support (L-PRES) Project, has commenced the rehabilitation and upgrade of nine livestock markets across the state to enhance livestock business, drive economic growth, and support sustainable development.

The Gombe State L-PRES Project Coordinator, Professor Usman Bello Abubakar, announced this during site visits to Kashere and Lalaipido livestock markets, where he officially handed over project sites to contractors.

Professor Abubakar explained that, in this phase of the project, nine livestock markets will be rehabilitated and constructed. These include three cattle markets in Bajoga, Lalaipido, and Kashere and six livebird markets in Bajoga, Kurugu, Dukku, Kwadon, Kumo, and Talasse, covering Funakaye, Shongom, Dukku, Yamaltu Deba, Akko, and Balanga Local Government Areas.

He clarified that the cattle markets will be rehabilitated and upgraded, while the livebird markets will be constructed from scratch.

Professor Abubakar emphasised that the project aligns with Governor Muhammadu Inuwa Yahaya's vision of transforming the livestock sector in Gombe State through a comprehensive overhaul of livestock marketing infrastructure.

He described local livestock markets as the backbone of the livestock value chain, highlighting that modernised markets with adequate space, toilet facilities, and security will create a conducive environment for livestock businesses to thrive.

“Rehabilitating and upgrading local livestock markets is a pivotal step towards establishing a large International Livestock Market and Ultra-Modern Abattoir. These improvements will not only stimulate business activities and create jobs but also revitalise the local economy, contributing significantly to the success of our ambitious projects,” he stated.

Responding on behalf of stakeholders, the Secretary of the Kashere Livestock Market Association, Alhaji Bappayo Yerima, and a representative from the local government council, Mallam Tanimu Abdullahi, commended Governor Muhammadu Inuwa Yahaya for rescuing the Kashere livestock market, which they described as

being in a deplorable condition before the intervention. They assured their full support for the successful completion of the project.

At Lalaipido, Shongom Local Government Area, the Project Coordinator, accompanied by the Local Government Chairperson, Hajiya Fatima Binta Bello,

inspected the designated project sites. He reiterated the importance of revitalising local livestock markets to support Gombe State's livestock transformation plan, urging stakeholders to embrace and support the state government's policies and programmes.

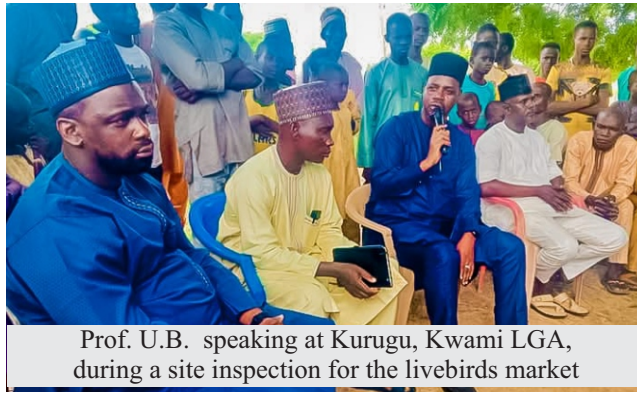
Professor Abubakar urged the contractors to adhere to contract agreements and ensure timely delivery of the projects, while encouraging market officials and other stakeholders to take ownership of the project, ensuring its long-term viability for sustainable development.

In their remarks, the contractors responsible for the projects in Kashere and Lalaipido, Alhaji Sabo Ibrahim and Honourable Abdullahi Adamu, assured the state government and the people of Gombe of their commitment to delivering high-quality projects that will stand the test of time.

The L-PRES intervention in these markets includes the construction of drainage systems, access roads, new market stalls/shades, renovation of existing stalls, loading bays, administrative offices, toilet facilities, security gates, and veterinary area offices.

## Gombe L-PRES Coordinator Visits Identified Project Sites For Livebird Markets In Funakaye And Kwami LGAs, Promises More Interventions

The Gombe State Government, under the L-PRES Project, has commenced the upgrade of livestock and livebird markets in Funakaye and Kwami Local Government Areas.



Prof. U.B. speaking at Kurugu, Kwami LGA, during a site inspection for the livebirds market

The State Coordinator, Gombe L-PRES Project, Professor Usman Bello Abubakar, explained that the objective of this initiative is to enhance the operational capacity of livestock markets by providing modern facilities in line with global best practices.

Accompanied by the Council Secretary, Abubakar Saidu, and other officials, the Project Coordinator inspected project sites in Bajoga, where the project was officially

handed over to the contractor, Alhaji Kawu Jitu Tongo.

The team examined existing structures and designated areas for new interventions, which include the construction of two new market stalls, renovation of an old one, installation of three gates, renovation of six toilet facilities, a veterinary office, a solar-powered borehole, a loading bay, and an administrative office. Similarly, at

the Bajoga Livebird Market, the intervention includes constructing a new market stall and a toilet. At Kurugu Livebird Market, the project will involve constructing a stall to provide shelter for traders, repairing an existing solar-powered borehole, and building a toilet facility.

Responding on behalf of the Local Government Chairman, the Deputy Chairman of Kwami LGA, Hon. Dahiru Ajiya Bojude, expressed gratitude to L-PRES for the intervention and commended Governor Muhammadu Inuwa Yahaya for his numerous developmental projects in Kwami LGA. He pledged the council's continued support for the policies and programmes of the administration.

## Gombe Government Upgrades Farmer Field Schools For Enhanced Livestock Production

In a collaborative effort to boost livestock production and enhance food security, the Gombe State Government, in partnership with the World Bank-assisted L-PRES Project, has embarked on rehabilitating and upgrading three key Farmer Field Schools (FFSs) across the state's senatorial zones.

The strategically located FFSs in Kupto (Funakaye LGA), Wajari (Yamaltu Deba LGA), and Ladongor (Billiri LGA) will serve as hubs for training farmers in modern livestock management techniques and best practices.

Recognising the critical challenges faced by livestock farmers, including climate change, disease outbreaks, limited access to quality inputs, and market constraints, Professor Usman Bello Abubakar stressed the importance of these centres during a recent site visit to Wajari, Yamaltu Deba LGA.

“The Farmer Field Schools will equip our farmers with the knowledge and skills needed to overcome these challenges, improving both their individual livelihoods and the

prosperity of their communities,” he stated.

These centres will feature livestock pens for cattle, sheep, goats, and poultry, where farmers will be trained in improved animal husbandry practices, including proper feeding, hygiene, and disease prevention. Additionally, the project will establish Forage Plots to demonstrate improved fodder crop cultivation and pasture management techniques.

Beyond infrastructure, the L-PRES Project will ensure the deployment of highly qualified facilitators and professionals to deliver comprehensive training programmes. “We are committed to inclusive participation, ensuring that youth and women are actively engaged in all aspects of the programme,” the State Coordinator emphasised, adding that strategies have been implemented to ensure the long-term sustainability of these schools.

To achieve this, L-PRES prioritised community ownership. Before rehabilitation commenced, extensive stakeholder engagement sessions

were held with community leaders, livestock farmers, youth groups, and women's organisations to ensure active community involvement in managing and sustaining the FFSs.

The rehabilitation and upgrade of these Farmer Field Schools represent a major step in modernising livestock production and marketing in Gombe State. According to Prof. Abubakar these centres will play a critical role in training and guiding farmers, particularly as the L-PRES Project expands into artificial insemination and milk collection programmes.

This initiative is expected to increase livestock production, improve animal health, enhance food security, and contribute significantly to the economic growth of Gombe State.



Farmer Field School, Wajari, Y/Deba LGA

## VETERINARY INFRASTRUCTURE AND SERVICES

### Gombe L-PRES Awards Contract For Kaltungo Veterinary Clinic To Enhance Animal Health

**K**altungo Local Government Veterinary Clinic will undergo total renovation and the construction of additional facilities in line with the Gombe State Government's plan to upgrade existing veterinary clinics towards the full implementation of the livestock reform programme.

Handing over the project site to Engineer Mubarak Ahmed of Aurora Space Limited, the contractor that will handle the project, the L-PRES Project Coordinator, Professor Usman Bello Abubakar, represented by the Project Engineer, Sameer Shehu, said the exercise will include the renovation of the entire building, comprising staff offices, the construction of large and small ruminant rooms, a toilet facility, a rabies room, and the building of a perimeter fencing wall.

Professor Abubakar said the move to upgrade community-based veterinary clinics is to prepare them for providing accessible livestock healthcare services ahead of the planned establishment of the Gombe Ultra-Modern Abattoir, International

Livestock Market, and tannery in 2025.



L-PRES team inspecting/handover Kaltungo Veterinary Clinic to contractor for renovations

He highlighted that the renovation of livestock and livebird markets has reached an advanced stage across the state, while solar-powered boreholes with drinking troughs have been provided in most livestock farming communities.

Before the handing-over exercise, the L-PRES team had earlier visited the local government secretariat and also paid a courtesy call on the village head of Baganje, Mallam Musa Galadima, as part of efforts to engage stakeholders and community leaders in the project implementation process.

Receiving the team at the Kaltungo Local Government Secretariat on behalf of the Chairman, the Secretary to the Local Government, Mr Andrew Aaron Labte, expressed appreciation to the Gombe State Government and the L-PRES Project for citing the intervention in their community and assured the team of their full support at all times. He further requested that the project consider including livestock farmers in Ture and Kamo communities in their interventions.

Speaking at his palace, the village head of Baganje, Mallam Musa Galadima, commended the State Governor, Alhaji Muhammadu Inuwa Yahaya, for his determination to revamp the livestock sector and assured the team and the contractor of his support, as well as that of his community, to ensure the success of the project in the area.

In his remarks, the contractor, Engineer Mubarak Ahmed, assured the community of his readiness to deliver a befitting project that will stand the test of time and solicited their cooperation and support.

### L-PRES Project Hands Over Dukku Area Veterinary Clinic To Contractor For Rehabilitation, Construction Of Additional Facilities

**I**n continuation of the Gombe State L-PRES Project's commitment to repositioning the livestock sector in the state, the Project Coordinator, Professor Usman Bello Abubakar, represented by the Project Engineer, Sameer Shehu, has handed over the veterinary clinic project site to Aurora Space Limited, the firm responsible for rehabilitating the Dukku Area Veterinary Office to a befitting standard.



Handing over of Dukku Veterinary Clinic renovation to the contractor

Speaking in Dukku shortly after the handing-over, Engineer Sameer stated that the exercise is part of the

project's 2024 work plan and budget aimed at improving the quality of existing veterinary clinics in the state. This initiative is designed to provide quality animal healthcare services as part of the Gombe State Livestock Reform Agenda, making the sector more attractive and competitive for businesses and investments to enhance income generation for livestock farmers and other value chain actors.

Professor Abubakar highlighted that, with support from the National L-PRES Project Office and the World Bank, Gombe State is on a high pedestal towards achieving the objective of making the state a centre for modern livestock business activities—not only within the country but also on the global livestock arena.

He called on livestock farmers and other stakeholders in Dukku to support the efforts of the State Governor, Muhammadu Inuwa Yahaya, in restoring the lost glory of the livestock industry, which has

historically contributed significantly to the economy of northern Nigeria.

Outlining the areas earmarked for the intervention, Engineer Sameer explained that the main clinic will be remodelled to meet standards for modern veterinary services, while the renovation of the staff office, the construction of a dog kennel (isolation centre), and the construction of toilet facilities will also be carried out.

Receiving the L-PRES team, the Veterinary Officer in charge of the Dukku Veterinary Area Office,

Mallam Ibrahim Jalo Hama, and his staff expressed appreciation for the intervention, which they described as timely, pledging to make good use of the facility to improve animal health in the area.

The Social Safeguard Officer of the project, Barrister Naomi Mwalin Abdu, who was also part of the team, held a stakeholder engagement meeting with the clinic staff on the need to form a community-based Grievance Redress Committee to address emerging social issues or challenges during and after the project implementation period.

### Gombe L-PRES Project Establishes Veterinary Diagnostic Laboratory, Cold Chain Facilities To Improve Animal Health, Curb Spread Of Diseases

In its efforts to ensure sustainable livestock business and quality meat production for both local and international markets, the Gombe State Government, through the Livestock Productivity and Resilience Support (L-PRES) Project, has established a disease surveillance laboratory and a cold chain facility at Gombe Veterinary Clinic, Tashan Dukku Cattle Market to ensure healthy animals for quality beef production in conformity with international best standards.

Formally receiving the two facilities, the commissioner of Agriculture, Animal Husbandry, and Cooperatives, Dr Barnabas Malle, stated that the development aims to fulfil the requirements needed for the transformation of the livestock sector and to open up opportunities for Public-Private Partnership (PPP) to build a robust livestock industry in the state.

Dr Barnabas Malle emphasised that the establishment of these facilities further underscores the resolve of the state government to revitalise the sector in preparation for the construction of an International

Cattle Market and Ultra-Modern Abattoir through the L-PRES Project, with support from the World Bank.

He explained that, upon completion, the International Cattle Market and Ultra-Modern Abattoir projects will reposition the state's economy, enhance revenue generation, and create job opportunities for women and youth in Gombe State.

Earlier in his remarks, the Gombe L-PRES Project Coordinator, Professor U. B. Abubakar, expressed appreciation to the contractors for a job well done, describing the facilities as important milestones in the journey towards transforming the livestock sector.

The Project Coordinator stated that the establishment of the disease surveillance and diagnostic centre and the cold room will go a long way in curbing the spread of livestock diseases, thereby minimising losses and improving animal health in the state.

The facilities are equipped with modern technologies, including microscopes, centrifuge and autoclave machines, incubators, and solar-powered cold rooms for vaccine storage, among others.

He assured livestock farmers that these innovations are not intended to displace them from their businesses but rather to enhance them through modernisation for increased productivity and profitability.



Inside the newly established cold chain facility and diagnostic laboratory

He assured the public of Governor Muhammadu Inuwa Yahaya's commitment to supporting the L-PRES Project, citing the Governor's recent visit to Morocco alongside the Project Coordinator, Professor Usman Bello Abubakar, to study successful livestock development models with the intention of replicating similar achievements in Gombe State.

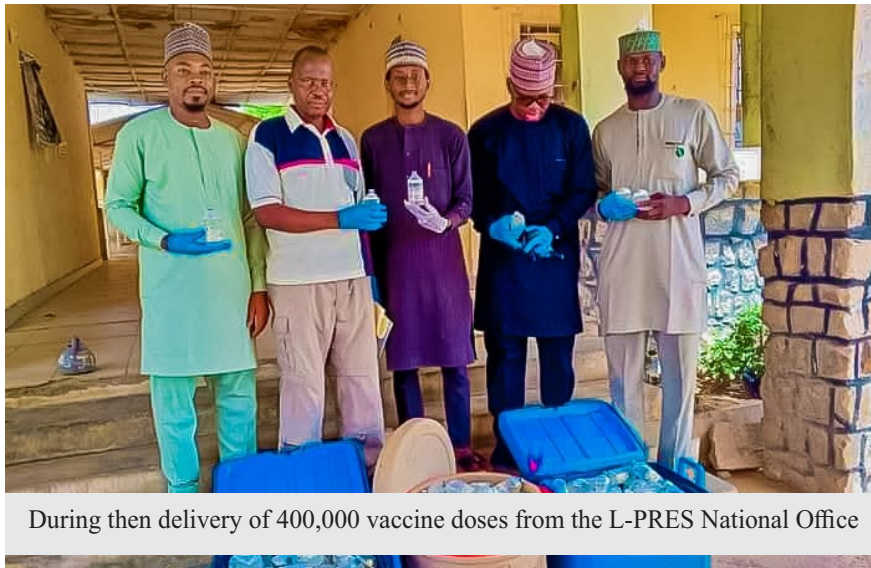
## Gombe L-PRES Donates 400,000 Doses Of Anthrax Spore Vaccines To Gombe State Government ...Reiterates Commitment To Boost Animal Health Services, Increase Livestock Productivity

**G**ombe State Government has received four hundred thousand (400,000) doses of Anthrax Spore Vaccines (ASV) as part of its efforts to strengthen animal health services in the state under the Livestock Productivity and Resilience Support Project (L-PRES).

Presenting the vaccines to the Ministry of Agriculture, Animal Husbandry, and Cooperatives on behalf of the state government, Dr Sadiq Abubakar Usman, Animal Health Technical Officer representing the L-PRES National Project Coordinator, Alhaji Sanusi Abubakar, stated that the vaccines were produced in line with Standard Operating Procedures (SOP) by the National Veterinary Research Institute (NVRI), Vom, with support from the National L-PRES Project. He highlighted the significance of the delivery to Gombe State, a major livestock-producing state in the country, emphasising that the vaccines would greatly enhance

livestock health and productivity. "The overall objective is to support the efforts of the State Government and the Gombe L-PRES Project in

state government's efforts to revitalise the livestock sector and control cattle diseases.



During then delivery of 400,000 vaccine doses from the L-PRES National Office

Gombe State L-PRES Project Coordinator, Professor Usman Bello Abubakar, represented by Dr Mohammed Umar Yuguda, Animal Health Officer to the Project, and Dr Dauda Mishel, Project Assistant, expressed satisfaction with the development.

Dr Yuguda stated that the vaccines would help improve animal health, maximise productivity, and generate revenue for both livestock farmers and the state government.

improving animal health services and further strengthening food security," Dr Usman explained.

Receiving the vaccines on behalf of the Honourable Commissioner of Agriculture, Dr Barnabas Malle, the Director of Veterinary Services in the Ministry, Dr Makeri Aminu Joseph, expressed appreciation to the L-PRES Project for the timely intervention.

He noted that the vaccines would play a crucial role in complementing the

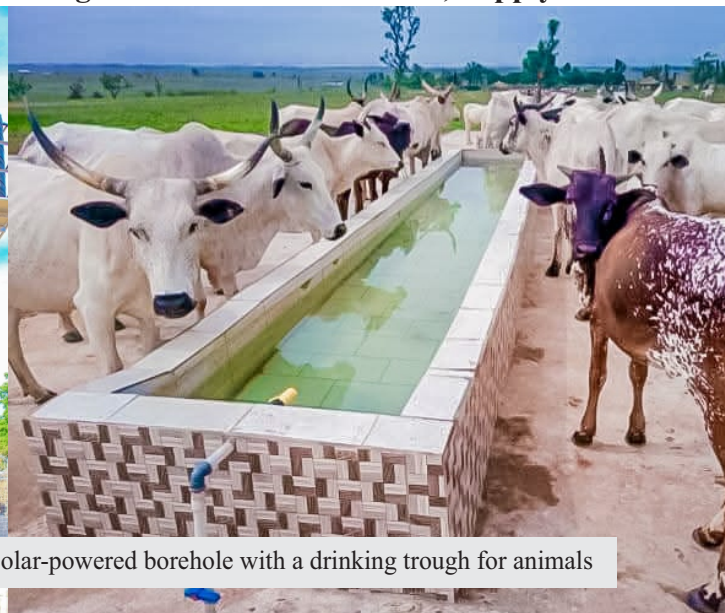
Since its commencement last year, the Gombe State L-PRES Project has conducted training sessions for staff and stakeholders, renovated abattoirs and earth dams, and held several engagement meetings with key stakeholders to revitalise the long-neglected livestock sector in Gombe State.

## WATER ACCESSIBILITY AND SUPPLY

### L-PRES: Transforming Livestock Production Through Enhanced Water Access, Supply

**W**ater scarcity has long been a significant challenge for livestock farmers in Gombe State, often forcing them to embark on unpredictable and often-conflicting migratory patterns in search of water for their animals.

Recognizing this critical issue, the Gombe State Livestock Productivity and Resilience Support (L-PRES) project under the leadership of Professor Usman Bello Abubakar has made significant strides in improving access to clean water for both



Newly completed solar-powered borehole with a drinking trough for animals

...Transforming livestock productivity, profitability and resilience for sustainable future

livestock and their keepers.

A key component of the L-PRES project has been the strategic rehabilitation and construction of water infrastructure. Notably, the project successfully rehabilitated three earth dams within the Wawa-Zange Grazing Reserve in Dukku and Funakaye LGAs, ensuring year-round water availability for livestock. Furthermore, to address the critical need for potable water across the state, the project embarked on an ambitious programme to expand access to clean water sources.

A total of 63 new solar-powered boreholes were installed across all 11

Local Government Areas, with an additional 33 existing boreholes rehabilitated, bringing the total number of reliable water sources to 96.

Each of these strategically placed boreholes is equipped with state-of-the-art features, including solar-powered facilities, a 20,000-liter capacity overhead reservoir, a dedicated drinking trough for livestock, and a five-pump reticulation system for human consumption.

These interventions have significantly improved the livelihoods of livestock farmers in

Gombe State by reducing reliance on unpredictable water sources, improving animal health, and enhancing overall animal productivity. By reducing the time and effort spent on water collection, pastoralists can dedicate more time to other productive activities, such as livestock rearing and marketing.

The success of these water-related interventions demonstrates the L-PRES project's commitment to addressing the critical needs of livestock farmers in Gombe State and fostering a more sustainable and resilient livestock sector.

## GRAZING RESERVE AND PASTURE DEVELOPMENT

### Governor Inuwa's Visionary Leadership: Transforming Wawa-Zange into a Thriving Livestock and Economic Hub

Gombe State, under the visionary leadership of Governor Muhammadu Inuwa Yahaya, CON, is redefining livestock farming through bold policies and strategic partnerships. With livestock playing a vital role in the state's economy, the government is harnessing the full potential of its grazing reserves—most notably, the Wawa-Zange Grazing Reserve, one of Nigeria's largest, covering 146,000 hectares across four Local Government Areas.

Through innovative collaborations with development partners, this flagship transformation project is reshaping pastoral livelihoods, strengthening food security, and driving economic growth.

#### **Water Canalisation: Ensuring Sustainable Water Supply**

In 2022, the Gombe State Government partnered with the Feed the Future Nigeria Rural Resilience Activity, a USAID-supported initiative, to revolutionize dairy, beef, and livestock breeding by improving



Animals grazing at Wawa-Zange Grazing Reserve

infrastructure, increasing animal productivity, and enhancing climate resilience.

A major challenge in the reserve was water scarcity, which severely impacted livestock farming and pastoralist livelihoods. To address this, the government collaborated with Mercy Corps and other development organisations to assess the feasibility of diverting water from the Gongola River into the Wawa-Zange Grazing Reserve.

A technical feasibility study analyzed rainfall patterns, evaporation rates, stream flow, topography, geology, and soil composition. The findings identified sandstone formations along potential canal pathways, with the most viable route spanning 35.95km—starting from Kupto, passing through Bodor, and reaching the Wawa-Zange Grazing Reserve.

The estimated cost of the ₦1.5 billion canalisation project is expected to directly benefit over 100,000

pastoralists and indirectly improve water access for 600,000 residents across the four surrounding LGAs.

Beyond solving water scarcity, the economic analysis concluded that this investment would enhance agricultural productivity, boost food security, and promote economic stability in the region.

### Expanding Opportunities: Business Case for Economic Growth in Wawa-Zange

Following the successful feasibility study, the Gombe State Government, in collaboration with USAID, Mercy Corps, IFDC, and Save the Children, launched a comprehensive assessment to explore investment opportunities and business ventures within the Wawa-Zange Grazing Reserve. The business cases focused on key areas, including renewable energy, beef production, and feedlot development.

#### 1. Renewable Energy for Livestock Development

Access to reliable electricity is critical for livestock processing, veterinary services, education, and agro-processing. To address this, the government proposed the installation of a 50kW solar mini-grid system to provide clean, uninterrupted power to key facilities, including:

- \* A veterinary clinic
- \* A healthcare center
- \* A nomadic school
- \* Commercial livestock processing units

By ensuring stable electricity, this initiative will unlock new business opportunities, improve service delivery, and attract investors to the reserve.

#### 2. Boosting Beef Production Through Improved Practices

For years, Gombe's livestock sector has been hindered by low productivity, caused by poor-quality

feed, inadequate disease control, and limited market access. To address these challenges, the government developed a commercialized beef production plan, emphasizing:

- \* Improved breeding techniques for healthier, high-quality cattle
- \* Access to high-nutrient feed to enhance livestock health
- \* Enhanced disease prevention measures to reduce mortality rates

A key recommendation from the study is the establishment of a cow-calf production system to ensure



Wawa-Zange Grazing Reserve

sustainable cattle rearing and increased economic returns for farmers.

#### 3. Feedlot Development for Commercial Beef Fattening

Recognizing the growing demand for high-quality beef, the government developed a strategic plan for establishing large-scale feedlots within Wawa-Zange Grazing Reserve.

The proposed plan includes:

- \* 80 feedlots for fattening cattle sourced from cow-calf producers and smallholders
- \* The development of 100-150 cow-calf production units
- \* Establishing 10-20 intensive combined dairy farms
- \* Investing in modern slaughterhouses, meat processing facilities, and upgraded butcheries to improve the beef value chain

This initiative aims to boost domestic beef supply while laying the groundwork for potential export markets in the future.

### The Brighter Future of Wawa-Zange Grazing Reserve Under Governor Inuwa and L-PRES

All the assessments and interventions previously mentioned were conducted between 2022 and 2023 under the National Livestock Transformation Plan (NLTP) and other related initiatives. With the launch of L-PRES in the fourth quarter of 2023, the project has gained momentum and is now making significant strides.

Soon, L-PRES will embark on the design phase for the canalisation of water into the Wawa-Zange Grazing Reserve, marking a historic milestone in the ongoing transformation of the livestock sector in Gombe State.

Professor Usman Bello Abubakar, Coordinator of the Gombe L-PRES

Project, emphasised the project's focus on improving water security within the reserve.

"Water security is a crucial focus of our project," Professor Abubakar stated. "Plans are underway to draw water from the Kupto River and tap into underground water resources. Geological surveys confirm the viability of these options, and industrial boreholes will soon be constructed. This improved water access will benefit animals, surrounding communities, and irrigation projects. It will also encourage herders who migrated due to water scarcity to return, further boosting the state's economy."

Additionally, the L-PRES project will introduce solar-powered energy solutions to the reserve, ensuring sustainable access to electricity for various activities, including refrigeration, processing, and community needs.

The project also envisions the establishment of a milk processing

centre, a modern market, and even a motel within the reserve, transforming it into a thriving hub for livestock-related activities and attracting visitors from within and outside the country.

With these advancements, Wawa-Zange is set to become a major supplier of high-quality beef, producing an estimated 48,000 metric tons annually. Its vast land, abundant resources, and strategic location position it as a national and regional hub for livestock production.

These strategic interventions will have a significant impact on Gombe's economy. They will boost the state's GDP through increased livestock production, create thousands of new jobs within the livestock value chain, enhance food security, improve

nutritional outcomes, and attract private-sector investments into the livestock industry.

Gombe State's bold vision for Wawa-Zange marks a turning point in Nigeria's livestock sector. Through strategic partnerships, innovation, and a commitment to sustainability, Governor Muhammadu Inuwa Yahaya's administration is setting a national benchmark for livestock transformation—offering a model for other states to follow.

#### **A Vision Beyond Livestock—A Legacy for the Future**

The Wawa-Zange project is more than just about livestock development—it is about people, jobs, food security, and economic resilience. As these initiatives take shape, Gombe State is on course to

becoming a leader in sustainable livestock development, not only in Nigeria but across Africa.

The Inuwa-led administration in collaborations with other development partners has established a nomadic School for the pastoralist, constructed dams, established human and veterinary clinics among other Infrastructures to attract investors and set tone for developing the reserve.

Further more, in December, 2024 Governor Inuwa Yahaya visited the Headquarters of AFREXIM Bank in Cairo Egypt to seek partnership in funding Key Development Projects to include funding for the Canalization of Wawa-Zange Grazing Reserve among other development Projects.

### **Gombe L-PRES Re-demarcates Cattle Routes, Grazing Reserves To Ameliorate Conflicts, Improve Production**

In a significant step towards resolving the long-standing farmer-herder conflicts, the Gombe State L-PRES Project has awarded a contract worth N200 million to I.S. Surveying & Geoinformatics, Ignited Goals Ltd. for the resurvey and re-demarcation of 38 cattle routes and grazing reserves across all 11 local government areas of the state.

Speaking at the event held at the conference hall of Gombe State Fadama Project, the Coordinator of the Gombe L-PRES Project, Professor Usman Bello Abubakar emphasised that the programme represents a crucial step towards finding a lasting and sustainable solution to the recurring conflicts that have plagued the state for decades.

Professor Abubakar urged the contractor to adhere strictly to the agreed specifications and complete the project within the stipulated timeframe of six months. He further emphasized that this initiative is not about creating new routes but rather about restoring internationally,

nationally, and locally recognised livestock routes that have existed since the colonial era. He urged community leaders, security agencies, and the general public to remain vigilant and promptly report any cases of trespass.



Ongoing re-surveying and re-demarcation of 37 cattle routes and 8 grazing reserves

Expressing their support for this crucial initiative, Alhaji Modibbo Sadeeq Ahmad Nafada, Chairman of the All Farmers Association of Nigeria (AFAN) Gombe State Branch, and Alhaji Modibbo Yaya, Chairman of the Gombe State Chapter of the Miyetti Allah Cattle Breeders Association of Nigeria (MACBAN), commended the state government for this proactive step. They assured the L-PRES Project and the state government of their full

support in ensuring the successful implementation of this project.

Recognizing the potential for community-driven conflict resolution, the stakeholders advised the state government to actively engage with community leaders, whom they identified as key players in resolving conflicts arising from land use disputes. They emphasized that many of these conflicts stem from the indiscriminate sale of livestock routes.

Governor Muhammad Inuwa Yahaya, in a separate address, commended the L-PRES Project for this significant achievement. He emphasized that this initiative demonstrates the commitment of his administration to finding lasting solutions to the challenges facing the livestock sector. He reiterated the importance of this project in fostering peaceful coexistence between farmers and herders, ensuring the sustainable development of the livestock sector, and enhancing the overall socio-economic development of the state.

## SECURITY AND CONFLICT PREVENTION/RESOLUTION

### Security: Gombe L-PRES Project Engages Stakeholders In Funakaye LGA To Foster Peace And Promote Sustainable Livestock Development

The Gombe State Livestock Productivity and Resilience Support (L-PRES) Project, led by Professor Usman Bello Abubakar, recently conducted an advocacy visit to Funakaye Local Government Area to foster peace, build understanding, and promote collaborative solutions for sustainable livestock development.



Cross-section of stakeholders after a peace and sustainable livestock development dialogue in Funakaye

particularly in light of recent conflicts reported in other parts of the state.

During an expanded stakeholders' engagement meeting in Bajoga, the headquarters of Funakaye LGA, Professor Abubakar emphasized the importance of peaceful coexistence between farmers and herders. He highlighted the mandate of the L-PRES Project to promote peace and security within the livestock sector,

Professor Abubakar also cited the ongoing re-survey and re-demarcation of cattle routes and grazing reserves as another crucial step towards addressing land-use conflicts and ensuring the safe and secure movement of livestock. He emphasized the importance of revamping the entire livestock sector

through innovation and technology, including artificial insemination, to maximize yields and profits.

The Project Coordinator urged stakeholders, particularly community leaders, to actively support the L-PRES Project and ensure improved community relations. He highlighted the importance of utilizing the Grievance Redress Committee (GRC) established by the L-PRES Project to address community issues and challenges related to the project.

The meeting was attended by a diverse group of stakeholders, including local government officials, traditional rulers, community leaders, and representatives of security agencies.

### Farmers/Herders Conflict: Gombe L-PRES Project Team Visits Yamaltu Deba LGA, Attends Security Meeting

The State Coordinator Gombe State L-PRES Project Prof. Usman Bello Abubakar has participated in an expanded stakeholder security meeting comprising security agencies and community leaders towards identifying root causes and proffering solutions over the recent conflict between farmers and herders in Yamaltu Local Government Area of Gombe state.



L-PRES team attending a security meeting at the Deba Emirate, Yamaltu Deba LGA

The meeting which took place at the palace of Emir of Deba, His Royal Highness, Ahmed Usman Muhammed was organised by the emirate following clashes between farmers and herders at Lano community which resulted in the death of one person and few injured. Addressing participants, the Divisional Police Officer to the LGA, Mr. Ibrahim Salisu Abdu said the purpose of the meeting was to address emerging security challenges in the LGA particularly the recent conflict at Lano community between farmers and headers.

During the meeting, the DPO, Local Government DSS officer Alhaji Garba, the Sector Commander Nigerian Army DadinKowa, Captain Adamu Buhari and the Nigeria Security and Civil Defence Corps (NSCDC) Divisional Officer to the LGA Alice Pisaghi all expressed disappointment over the incident and lamented that despite several efforts made by security agencies to maintain peaceful co-existence, community leaders and their subjects have yet allowed such dastardly acts to occur.

They charged community leaders to verify the status of visitors coming to

their communities and warned against harboring suspicious characters urging them to report such elements immediately to security agencies.

In his remarks, the Coordinator Gombe L-PRES Project who was represented by the Social Safeguard officer to the Project Barr.

Naomi Abdu said the scope of conflicts between farmers and herders in the country is alarming in recent years, quoting recent research which attributed the conflicts to increase in population, reduced grazing lands and effects of climate change among others, causing large hordes of pastoralist to move in search of fodder for their cattle resulting in animal straying into farmlands and destroying crops.

He said, it was in recognition of these challenges that Gombe L-PRES Project introduced various interventions including rehabilitation of livestock infrastructures like earth dams, solar powered bore-holes in

livestock farming communities and distribution of fodder seedlings to support livestock farmers in the state. "The project is deeply concerned about the economic and social impact of such conflicts that the project deem it fit come here and participate in this crucial security meeting so as to identify the root causes and issues surrounding the recent conflict ". He said.

He hinted that, the Gombe State Government under the L-PRES Project with support from the World Bank has awarded a contract for re-survey and demarcation of 37 cattle routes and 8 grazing reserves in the state as part of efforts to reduce incessant conflicts between farmers and headers that has caused loses of

lives and property.

He noted that the project has inaugurated conflict management and mediation committee's at state and local government levels for stakeholders to amicably prevent and respond to crop farmers/herders conflicts, calling on the aggrieved parties to imbibe tolerance with one another and live in peace.

Community leaders who spoke at the meeting agreed to work together with security agencies and pledged to report anyone found wanting against government efforts in promoting peaceful co- existence in their communities.

The Divisional Police Officer to the

LGA Mr Ibrahim Salisu Abdu note that security agencies will work closely to monitor further developments and charged community leaders to cooperate with relevant stakeholders towards finding a lasting solution to conflicts between herders and farmers in the local government.

Earlier, the L-PRES team paid a courtesy visit to the Yamaltu Deba local Government Chairman Hon. Abubakar Hassan Difa at his office where they were received by the Secretary to the LGA Aliyu Ibrahim and the Departmental Security Officer Saidu Mele at the instant of the local Government at the security meeting.

### Gombe L-PRES Project Visits Bangu Following Tragic Incident Involving Farmer



L-PRES team at Bangu, Balanga LGA

The Gombe State Livestock Productivity and Resilience Support (L-PRES) Project has expressed deep concern following the tragic death of a cotton farmer in Bangu ward, Balanga Local Government Area. The incident, which occurred at the end of the harvest season, highlighted the need for continued efforts to mitigate farmer-herder conflicts and foster peaceful coexistence within the state. In a swift response, the Project Coordinator, Professor Usman Bello Abubakar, directed the L-PRES team to visit the affected community and engage with stakeholders to assess the situation and explore avenues for peace-building.

During a courtesy visit to the Chairman of Balanga Local

Government, Hon. Ibrahim Salihu, the L-PRES team, under the leadership of the Social Safeguard Officer, Barr. Naomi Mwalin Abdu, informed the Chairman about the purpose of the visit and emphasized the L-PRES Project's commitment to addressing the root causes of farmer-herder conflicts.

The Chairman expressed appreciation for the L-PRES Project's concern and highlighted the numerous interventions implemented by the Project to improve the livestock sector in the state. He also commended the timely completion of live bird market stalls constructed in Talasse by the project to support local businesses.

The team, accompanied by the Chairman and the Departmental

Security Officer (DSO) to the LGA, Usman A. Waziri, subsequently visited the palace of the District Head of Bangu, Mallam Danjuma Suleiman.

Speaking at the palace, Barr. Naomi reiterated the L-PRES Project's commitment to finding sustainable solutions to farmer-herder conflicts. The District Head of Bangu, Mallam Danjuma Suleiman, shared details of the tragic incident, emphasizing the need for calm and caution while investigations continue. He expressed gratitude for the L-PRES Project's support and highlighted the historical peaceful coexistence between farmers and herders in the community.

The team also visited the family of the deceased farmer to condole with them over the unfortunate event and share the grief.

The L-PRES Project team advised the community to engage in dialogue and build trust between farmers and herders. They emphasized the need for an impartial investigation to identify and prosecute those responsible for this tragic incident and assured the community that the findings would be submitted to the Project Coordinator and relevant authorities.

## Security: Gombe L-PRES Partners Ministry Of Internal Security And Home Affairs To Enhance Security, Promote Peace

The Gombe State Livestock Productivity and Resilience Support Project (L-PRES) has forged a crucial partnership with the Ministry of Internal Security and Home Affairs to enhance citizen security and foster a more peaceful and prosperous environment for the state's livestock sector.

This collaboration was formalized during a courtesy visit by the Commissioner for Internal Security and Home Affairs, Lt. Colonel Abdullahi Bello (rtd), to the L-PRES Project Coordinator, Professor Usman Bello Abubakar, at the Project Coordination Office.

The Commissioner, accompanied by the Director of Administration and Finance and other senior officials, briefed Professor Abubakar on the Ministry's mandate and activities, emphasising the shared objective of improving the welfare and security of Gombe State citizens. Recognising the significant overlap in their mandates, both parties expressed a strong commitment to collaborative efforts.

Professor Abubakar acknowledged the critical role played by the Ministry in maintaining peace and order within the state, particularly in addressing the challenges posed by farmer-herder conflicts. He highlighted the recent incidents of clashes in Funakaye, Dukku, and Kwami Local Government Areas, in areas neighbouring Wawa-Zange Grazing Reserve, emphasizing the urgent need

cattle routes, a crucial step towards resolving land-use conflicts and ensuring the safe and secure movement of livestock.

The Commissioner commended the L-PRES Project for its far-reaching interventions aimed at transforming the livestock sector in Gombe State. He acknowledged that while the Ministry of Internal Security and Home Affairs plays a crucial role in maintaining law and order, its mandate also encompasses the socio-economic protection of citizens. The Commissioner expressed his eagerness to collaborate with the L-PRES Project to leverage its expertise and resources to enhance the well-being and security of all citizens in the state.



Cross-section of L-PRES team members and visiting officials from the Ministry of Internal Security and Home Affairs, Gombe State

for coordinated efforts to mitigate these conflicts.

Professor Abubakar further emphasized the L-PRES Project's commitment to fostering peaceful coexistence and enhancing the livelihoods of livestock farmers. He informed the Commissioner about the recent landmark achievement of surveying and re-demarcating eight grazing reserves and thirty-eight

This partnership signifies a significant step towards creating a more secure, peaceful, and prosperous future for Gombe State. By combining their strengths and resources, both entities can effectively address the challenges facing the livestock sector, enhance the livelihoods of livestock farmers, and contribute to the overall socio-economic development of the state.

## Gombe L-PRES Project Partners LGA's To Foster Peace And Enhance Livestock Production In Wawa Zange Grazing Reserve

The Gombe State Livestock Productivity and Resilience Support (L-PRES) Project is taking proactive steps to foster peaceful coexistence and enhance livestock production within the Wawa-Zange Grazing Reserve by strengthening collaborations with local governments.

During a recent visit to the Funakaye Local Government Area, Professor Usman Bello Abubakar, Coordinator of the Gombe L-PRES Project, met with the Executive Chairman, Alhaji Shuaibu Abdulrahman Adamu, to discuss strategies for mitigating farmer-herder conflicts and

maximizing the potential of the Wawa-Zange Grazing Reserve.

Professor Abubakar expressed concern over the recurring conflicts in the area, particularly those impacting the Wawa-Zange Grazing Reserve, and emphasized the need for concerted efforts to address these challenges and ensure the sustainable development of the livestock sector.



SPC, Prof. U.B. Abubakar, meeting with the Chairman of Funakaye LGA

He highlighted the strategic importance of the Wawa-Zange Grazing Reserve to the state's economy and emphasized the need

for a collaborative approach to unlock its full potential.

"Recognizing the importance of this reserve, which His Excellency, Governor Muhammadu Inuwa Yahaya, prioritizes for development," Professor Abubakar stated, "we must work together to ensure its sustainable utilization and prevent conflicts that hinder progress." He commended the Governor's bold initiative to address the long-standing farmer-herder conflicts by reviving grazing reserves and cattle routes across the state.

The Executive Chairman of Funakaye Local Government,

represented by the Secretary to the Local Government, Alhaji Sa'idu Abubakar, welcomed the L-PRES Project's efforts and expressed his commitment to collaborating with the project to improve livestock production and enhance the livelihoods of pastoralists. He acknowledged the local government's ongoing efforts to engage with neighboring local governments and the leadership of the Miyetti Allah Cattle Breeders Association of Nigeria (MACBAN) to address the challenges facing the livestock sector.

The meeting resolve that a platform for wider consultation and

engagement would be organised, bringing together farmers, herders, community leaders, local government representatives, and security agencies to discuss challenges, share concerns, and explore collaborative solutions.

By fostering open dialogue and collaboration among key stakeholders, the L-PRES Project aims to create a more peaceful and secure environment for livestock production within the Wawa-Zange Grazing Reserve, unlocking its full potential and contributing significantly to the economic growth and development of Gombe State.

### Grievance Redress Mechanism: A Reliable Tool for Promoting Peace, Transparency and Accountability

The Gombe State Livestock Productivity and Resilience Support (L-PRES) Project, recognizing the crucial role of transparency and accountability in project implementation has placed significant emphasis on establishing and strengthening Grievance Redress Mechanisms (GRMs) at all levels. These mechanisms are designed to ensure that the voices of project beneficiaries, stakeholders, and affected communities are heard and their concerns addressed effectively and amicably.



L-PRES team after the inauguration of the Management-Level Grievance Redress Committee

The L-PRES Project, under the leadership of Professor Usman Bello Abubakar, is committed to implementing a robust GRM system that aligns with international best practices, including those outlined by the World Bank. This commitment is evident in the project's proactive engagement with communities and its efforts to ensure that all stakeholders have access to a transparent and accessible platform for voicing their concerns and seeking redress.

The project has conducted numerous community engagement meetings, such as the one held at the palace of the District Head of Birin-Fulani in Nafada LGA, to sensitize community leaders and stakeholders on the importance of the GRM and

encourage their active participation in the process. These meetings aim to foster open communication, build trust between the project and the community, and ensure that project interventions are implemented in a

manner that is sensitive to the needs and concerns of all stakeholders.

At the heart of the L-PRES Project's commitment to transparency is the establishment of a multi-tiered GRM system. This includes:

**Project-level GRC:** The L-PRES Project has established a dedicated management-level GRC within the project coordination office. This committee is responsible for receiving, investigating, and addressing grievances that arise at the project level. The GRC is mandated to adhere to a clear set of procedures, ensuring that all grievances are handled fairly, impartially, and confidentially.

**State-level GRC:** A state-level GRC had been established to address complex or systemic issues that require higher-level intervention. This will ensure that all levels of grievance are addressed effectively and efficiently.

**Community-level GRCs:** These committees, established at the community level, play a crucial role in identifying and addressing local concerns and grievances. They act as the first point of contact for community members to raise any issues related to project implementation, such as

concerns regarding project design, implementation, or potential impacts. The L-PRES Project recognises that the success of any development project hinges on the trust and confidence of the communities it serves.

By prioritizing transparency and accountability through a robust and accessible GRM, the project aims to ensure that the voices of all stakeholders are heard, their concerns are addressed, and the benefits of the project are equitably distributed. This commitment to transparency and accountability is crucial for ensuring the long-term sustainability and success of the L-PRES Project and its contribution to the socio-economic development of Gombe State.

## Gombe L-PRES Project, Agro Rangers Collaborates To Combat Farmer-Herder Conflicts, Promote Food Security



Cross-section of L-PRES team members with Agro Rangers

The Gombe State Livestock Productivity and Resilience Support Project (L-PRES), under the leadership of Professor Usman Bello Abubakar, has expressed commitment to collaborate with Agro Rangers, a security unit under the Nigeria Security and Civil Defence Corps (NSCDC), to tackle the persistent conflict between farmers and herders. These conflicts, which have become a growing concern for stakeholders, threaten food security in the country.

Professor Abubakar made this known during a meeting with the Agro Rangers team, led by Assistant Commandant of Corps, Mr. Emmanuel Onyeken Idoke, at the L-PRES conference room. This engagement was part of the project's broader efforts to work with relevant stakeholders to enhance livestock production in the state.

Recognizing the crucial role that security and peaceful coexistence play in the success of both the agriculture and livestock sectors, L-PRES, in collaboration with the Ministry of Agriculture, Animal

Husbandry, and Cooperatives, inaugurated peace and conflict management committees across all 11 local government areas of the state. These committees aim to resolve the conflicts that have negatively impacted agricultural and livestock output, along with other value chain activities.

Professor Abubakar also expressed concern over the arbitrary killings of livestock and the destruction of farm produce in some communities, which has contributed to the deteriorating food security situation in the country. He urged the Agro Rangers to strengthen the state government's efforts, pledging to work together to find lasting solutions to the farmer-herder conflicts.

In his opening remarks, Mr. Emmanuel Onyeken Idoke, the Commandant of the Gombe State Agro Rangers Unit, emphasized the importance of peace building in addressing the conflicts between farmers and herders. He noted that the visit aimed to introduce the unit's staff and discuss a practical framework to foster peace and stability.

Mr Idoke emphasized that Agro Rangers have played a key role in restoring security in states affected by banditry and kidnapping, which has in turn threatened food security.

The Agro Rangers Commandant assured that their efforts would be directed towards promoting peaceful coexistence and using alternative dispute resolution methods to restore trust and confidence between farmers and herders. He expressed confidence that this approach would significantly contribute to increasing livestock and food production, ultimately benefiting both the state and the nation. He further assured the L-PRES project that the unit would provide all necessary support to ensure the security of livestock farmers.

Agro Rangers, a special security unit under the NSCDC, is specifically trained to provide forest security, address the recurring farmers/herders conflicts, and protect agro-allied investments. They also serve as mediators in areas prone to conflict, ensuring that the agricultural sector can thrive in a secure environment.

## CLIMATE CHANGE MITIGATION AND ENVIRONMENTAL SUSTAINABILITY

### Gombe Gov't Distributes Over 20,000 Seedlings to Livestock Farmers To Combat Climate Change, Provides Livestock Feed

In a bid to promote sustainable agriculture and climate-resilient practices, the Gombe State Government through the Livestock Productivity and Resilience Support

(L-PRES) Project has distributed over 20,000 seedlings to farmers across the state.

The Gombe State Coordinator of the Livestock project, Professor Usman

Bello Abubakar announced this during the distribution exercise held at Abmar Hall, opposite Federal Teaching Hospital, Gombe.

Professor Abubakar highlighted that climate change has become a global concern with devastating consequences for many, particularly livestock farmers who rely on natural resources.

"Climate change is a global crisis that disproportionately affects livestock farmers. In recent years, we've witnessed a significant decline in fodder and pastureland due to desertification, erosion, and land degradation. The increasingly harsh climate, with soaring temperatures, poses significant challenges to livestock productivity across the country, including Gombe State."

Having learned about the devastating effects of climate change on livestock farming, the L-PRES Project initiated a distribution of tree seedlings to farmers as a mitigation strategy. He revealed that so far the project has



Livestock leaders and farmers during the fodder seedlings distribution exercise

distributed over 20,000 seedlings of mostly economic trees of various species to include, guava, pawpaw, moringa, eucalyptus, garden neem among others.

He noted that "The seedlings, which include various tree and forage species, will provide much-needed shade, fodder, erosion control and additional food sources for farmers, ultimately reducing costs and increasing income".

He explained that the distribution of tree seedlings is an ongoing initiative

undertaken to create sustainable grazing lands and reduce farmers' reliance on dwindling natural resources in Gombe State.

Prof U. B. further highlighted that the initiative aligns with the state government's mission under Governor Muhammadu Inuwa Yahaya which is committed to ensuring the long-term viability of the livestock sector, commending the governor for his support to the L-PRES Project.

Responding on behalf of the beneficiaries, Yahaya Modibbo, Chairman of Miyetti Allah Cattle Breeders Association, Ardo Cindo Abubakar, Chairman of Miyetti Allah Kautal Hore, and Ahmad Bello, State Chairman of Jonde Jam, expressed their gratitude and pledged to nurture the seedlings and use them to improve their livestock businesses.

### Gombe State Partners China's Juncao Technology Center To Promote Animal Feed Production, Combat Desertification, And Alleviate Poverty

*... Collaboration Supports Our plans to Establish Fodder Banks, Grazing Colonies Along Cattle Routes – Prof U. B. Abubakar*

The Gombe State Government, under the L-PRES and ACREsAL Projects, has convened a joint technical committee meeting with the China-based Juncao Technology Development Center to explore sustainable options for livestock feed production, combat desertification, and create job opportunities for youth and women in Gombe State.

This development, according to Gombe L-PRES Project Coordinator Prof. U.B. Abubakar, aligns with the vision of the State Governor, Muhammadu Inuwa Yahaya, to revitalize the livestock sector for economic growth and development.

The meeting, held at the L-PRES Project conference hall, was attended

by the two Project Coordinators: Prof. Usman Bello Abubakar and Dr. Sani Adamu Jauro, along with Dr. Lawandi Datti representing Juncao Technology.

The joint meeting focused on identifying steps to address



SPC, Prof. U.B. Abubakar, during a joint discussion with ACREsAL and China's Juncao team on animal feed production

environmental challenges that have impacted both livestock production and agriculture in the state. The meeting is expected to pave the way

for further collaborations and partnerships between the Gombe State Government and the Juncao Technology Demonstration Center, which has full endorsement from the United Nations for combating climate change and producing nutritious forage, including Napier and Elephant grasses, globally recognised for their rapid growth, suitability for livestock, and environmental protection.

Similarly, this collaboration will provide opportunities for the Gombe L-PRES Project's efforts and plans to establish fodder banks and grazing colonies along cattle routes, which are currently undergoing re-survey and re-demarcation as part of the state government's intervention under the L-PRES project to reduce farmer-herder conflicts in the state.

Juncao technology is also renowned for its production of various mushroom species for human consumption, protein sources, and

medicinal purposes. This innovative venture, introduced by the Juncao Technology Center at China's Fujian Agriculture and Forestry University,

provides an alternative source of income and livelihood for smallholder farmers in over 100 developing countries.

## Climate Change Mitigation: Gombe L-pres Empowers Farmers With Fodder Seeds To Boost Livestock Production

*...Project Unveils Plan for 'Waste to Wealth' Initiative*



Dr Yuguda of L-PRES leading the fodder seed distribution to livestock farmers

The Gombe State L-PRES Project has taken a proactive step to mitigate the impacts of climate change on livestock production by distributing 800 kilograms of diverse fodder seeds and shrubs to livestock farmers across the 11 local government areas of the state. This initiative, aims to encourage the development of sustainable pastoral lands and enhance livestock feed quality.

Twenty varieties of fodder seeds and shrubs were distributed to verified livestock farmers, empowering them to cultivate nutritious feed for their animals. Dr. Mohammed Umar Yuguda, the Animal Health Officer of the L-PRES Project, emphasized the importance of optimal utilization of these materials, highlighting their potential to significantly enhance the

nutritional content and quantity of livestock feed.

"These fodder seeds, when planted, have the capacity to produce large quantities of highly nutritious feed," Dr. Yuguda stated. "This will be invaluable as supplementary feed during the dry season, leading to improved beef and dairy production." Furthermore, the L-PRES Project is embarking on a "Waste to Wealth" initiative. Mr. Mohammed Bukar Gadam, the Animal Husbandry Officer of the Project, announced plans to provide crop residue crushing and fodder chopper machines to livestock cooperative societies across the state. He emphasized that this initiative will enable farmers, through their cooperatives, to process and package animal feed, effectively reducing crop

residue wastage and significantly increasing the rate of feed consumption by livestock. This, in turn, will lead to a substantial increase in both the quantity and quality of beef and dairy production.

Expressing gratitude on behalf of the beneficiaries, the Chairman of the Koutal Hore Socio-Cultural Association, Gombe State Branch, Ardo Chindo Abubakar, commended the Gombe L-PRES Project for its numerous support programmes aimed at empowering livestock farmers in the state. He also extended his appreciation to Governor Muhammadu Inuwa Yahaya for his laudable initiatives to transform the livestock sector into a modern and thriving industry. Ardo Abubakar assured the project of their continued support in achieving its objectives.

*...Transforming livestock productivity, profitability and resilience for sustainable future*

## CAPACITY BUILDING, TRAINING AND ENGAGEMENT

### Gombe L-PRES Conducts 5-day Training For Projects Staff On Communication Strategies

The Gombe State L-PRES Project has conducted five-day training for the staff of the state implementation unit towards ensuring effective communication for seamless implementation of the project.

Speaking during the training, the state coordinator, Gombe L-PRES, Professor Usman Bello Abubakar reiterated the importance of proactive and effective communication for the success of any organisation.

He commended the participants for their dedication throughout the training and urged them to apply the lessons learnt in both their official and personal responsibilities.

He assured them of the project's commitment to providing a conducive working environment and the necessary tools for staff to contribute their best towards achieving the project's development objectives.

The Project Coordinator further commended the resource persons for conducting high-quality training programmes, acknowledging the



Gombe L-PRES staff displaying their certificates at the end of a five-day training on communications

training's potential to significantly enhance job performance.

The lead trainer from Four Icons Premium Limited, Mrs Aishat Onusi, drew the participants' attention to the importance of properly identifying and engaging beneficiaries and stakeholders before embarking on any intervention. She stressed that such an approach will go a long way in building trust and collaboration for achieving the project's goals and objectives.

She noted that many projects fail largely due to the exclusion of target beneficiaries and stakeholders from the decision-making process during project design, which, in turn, hinders sustainability. Mrs Aishat therefore urged project staff to involve communities in need assessments and to outline their priorities before embarking on such projects.

Another Presenter, Sanni Momoh, a media training expert, discussed the relevance and strategies of communicating Success Stories: Showcasing Project Results.

He explained that such stories are written to highlight the impact and outcomes of project interventions over a measured period of time. He stated that success stories must feature selected and specific interventions that have made a significant impact on the lives of targeted individuals and communities.

He further stressed that the stories should be written with compelling narratives and creativity to inspire stakeholders and the general public, thereby building credibility for the project and attracting more funding and support from development partners.

Participants were invited to share individual presentations on the lessons they had learnt and how they intended to apply them in their respective roles. The training also featured a question-and-answer session as well as exercises.

### Awareness: Gombe Livestock Farmers Sensitized On Adoption Of Artificial Insemination, Improved Breeding

*... As Project Coordinator Lauds Its Potentials To Maximize Productivity and Profitability*

The Gombe State Livestock Productivity and Resilience Support (L-PRES) Project has sensitized livestock farmers across 11 local government areas of the state on the adoption of artificial insemination and improved breeding techniques for more productivity and profitability.



SPC interacting with livestock farmers during a sensitisation session on Artificial Insemination

Welcoming the participants at Abmar Hall, the Project Coordinator Professor Usman Bello Abubakar highlighted that the training was to create more awareness on the need for livestock farmers to embrace modern livestock breeding techniques considering their potentials to enhance animal fertility,

*...Transforming livestock productivity, profitability and resilience for sustainable future*

maximize livestock population and profits across the livestock value chain.

Professor Abubakar said, "Adoption of artificial insemination practices will increase yields in livestock, enhance quality and quantity of beef, milk and other dairy products".

He described the traditional approach as less productive and waste of scarce resources without tangible results. He charged livestock farmers to embrace modern approach to further create additional value chain business opportunities in the sector, sighting

the formation of cooperative societies and its capacity to accommodating milk collectors, transporters and more actors thereby generating more employment and jobs for women and youth in the state.

He also called on livestock farmers to make good use of the follow up training on "Management of Cooperative Societies" which he described as critical to the success of these initiatives and the overall project objectives in order to achieve better outcomes.

The Permanent Secretary Ministry of Agriculture, Animal Husbandry and

Cooperative Alhaji Mohammed Ibrahim Jalo attended the event on behalf of the ministry.

Among the participants is the State Chairman Miyetti Allah Cattle Breeders Association of Nigeria, Modibbo Yahaya, the Chairman Miyetti Allah Kautal Hore Socio Cultural Association Gombe State Chapter Alhaji Chindo Abubakar and Ahmad Bello Chairman Jonde Jam Youth Organization among other farmers and leaders of livestock associations those who witnessed the event.

### Vaccination: L-PRES, Gombe LG Collaborate To Improve Animal Health, Commence Annual Vaccination Against Livestock Diseases

**G**ombe State Livestock Productivity and Resilience Support (L-PRES) Project Coordinator Professor Usman Bello Abubakar has joined the Chairman Gombe Local Government Barrister Sani Ahmad Haruna and other stakeholders to flag off the 2023/2024 Gombe Local Government Annual Livestock Vaccination exercise at Gombe Commercial Area.

Speaking at the event the L - P R E S Project Coordinator reiterated the importance of livestock vaccination in curbing the spread of diseases that pose serious threats not only to animals and humans but the economic survival of the state as well.

He noted that the spread of animal diseases have affected both meat and dairy production and inflicted heavy economic losses annually to both the state and livestock farmers whose livelihood depends entirely on the business.

He said it was in realization of these challenges that the State Governor Muhammad Inuwa Yahaya consistently spearheaded the free annual livestock vaccination exercise to curb such losses, calling on livestock farmers to take full

advantage of the opportunity provided to vaccinate their animals.

Professor Abubakar hinted that Gombe State Government in collaboration with the L-PRES Project has introduced wide range of interventions to transform the sector

communities to address water needs for livestock, as seedlings for pasture development had been distributed to livestock farmers in the state to develop fodder banks for enhanced animal nutrition.



Gombe LGA Chairman, flagging off the livestock vaccination exercise under the close supervision of Gombe L-PRES SPC

which included award of contract worth millions of Naira for the restoration of cattle routes and grazing reserves to end frequent clashes between farmers and herders as part of the ambitious implementation of the livestock reforms going on in the state.

Highlighting the importance of water and animal feed for improved animal health, Professor Abubakar added that the project had already rehabilitated earth dams at Wawa-Zange Grazing Reserve, Siddikiyo and Gerengi communities in Funakaye Local Government areas in addition to construction of solar powered boreholes in hard to reach

He said the surveillance and diagnostics laboratory was also established at Tashan Dukku livestock market in preparation for healthy beef production for international markets in line with the vision of the state government to properly reposition Gombe State as hub for global livestock business.

He assured livestock value chain actors that when the International Livestock Market and Gombe Ultra Modern Abattoir are fully established, these legacy projects would go a long way in creating lucrative livestock businesses with huge economic benefits for the state. He commended the State Governor Muhammad Inuwa Yahaya for his wonderful initiatives.

In his remarks the Chairman Gombe Local Government Barrister Sani Ahmad Haruna highlighted that Gombe Local Government possessed great potentials for growth and prospects for investment and industrialization in both agriculture

and livestock sectors which must be exploited to create jobs and income generation.

He commended the State Governor for providing an enabling environment for investment in the state while appreciating the L-PRES Project for spearheading a new approach and innovations in the livestock sector which he described as unique, transparent and easily adaptable.

Earlier in his address of welcome the Secretary Gombe Local Government

Alhaji Aliyu Mohammed Dawaki expressed satisfaction to the L-PRES Project Coordinator Professor Usman Bello Abubakar for the numerous Interventions introduced by the project which he said are gradually changing traditional practices towards embracing modern livestock farming in the state.

The Area Veterinary Officer to the Local Government Mallam Ali Yau also stressed the need for livestock farmers to embrace the annual vaccination exercise and modern practices introduced by L-PRES in

order to produce healthy animals and animals product.

In a goodwill message the Overseer Gombe Senior District Head Office Alhaji Usman Shettima who is also the District Head of Nasarawa commended the State Governor for giving the livestock sector required support and expressed appreciation to the L-PRES Project for its interventions, calling on people of the state to support these remarkable achievements.

## Gombe L-PRES Praises Governor Inuwa's Non-interference, Strengthens Stakeholder Collaboration Towards Successful Project Implementation

### ...Commits To Preventing Anthrax and Bird Flu In Gombe State



The Gombe State Livestock Productivity Resilience and Support (L-PRES) Project recently hosted the leadership of the Nigerian Veterinary Medical Association (NVMA), Gombe State Chapter, for a courtesy visit at its coordination office.

During the visit, the State Coordinator, Professor Usman Bello Abubakar, expressed gratitude for the engagement, emphasizing its importance in fostering collaboration and enhancing project outcomes. "This visit strengthens our relationship and reinforces our shared commitment to advancing the livestock sector," he stated, highlighting the vital role of veterinarians in improving public health and livelihoods.

Professor Abubakar attributed the project's successes to the visionary leadership of Governor Muhammadu

individual or interfered in our work. His focus has always been on improving lives and developing the state," the coordinator affirmed.

He further acknowledged the Federal Government's establishment of the Ministry of Livestock, describing it as a significant step toward revitalizing a sector that has historically been overlooked despite its critical contributions to the nation's GDP.

Reflecting on the project's achievements, Professor Abubakar highlighted initiatives such as vaccination campaigns against Anthrax, which have bolstered the state's preparedness against outbreaks. "We are committed to vigilance and ready to support efforts to combat diseases like Anthrax and Bird Flu," he stated, urging veterinarians to promptly report any suspicious cases.

The coordinator also outlined plans for capacity-building programmes to

Inuwa Yahaya, commending his unwavering support and strategic foresight. He specifically praised the governor's non-interference in the project's activities. "Since assuming office, His Excellency has never pressured us to favor any

individual or interfered in our work. His focus has always been on improving lives and developing the state," the coordinator affirmed.

He further acknowledged the Federal Government's establishment of the Ministry of Livestock, describing it as a significant step toward revitalizing a sector that has historically been overlooked despite its critical contributions to the nation's GDP.

Reflecting on the project's achievements, Professor Abubakar highlighted initiatives such as vaccination campaigns against Anthrax, which have bolstered the state's preparedness against outbreaks. "We are committed to vigilance and ready to support efforts to combat diseases like Anthrax and Bird Flu," he stated, urging veterinarians to promptly report any suspicious cases.

The coordinator also outlined plans for capacity-building programmes to

enhance veterinarians' skills, emphasizing the importance of sustainability through education, innovation, and modern approaches.

Among the project's transformative initiatives, he spotlighted the International Livestock Market and Ultra-Modern Abattoir, describing it as a landmark achievement with benefits that will extend beyond Gombe State to the entire African continent. He also unveiled plans for a modern dairy processing plant and the recruitment of private veterinarians to serve rural communities, underscoring L-PRES's dedication to enhancing productivity and livelihoods.

NVMA Gombe State Chairman, Dr. Adamu Hama Boyi, commended L-PRES for its impactful interventions, including the renovation of veterinary clinics, abattoirs, and livestock markets, as well as the upgrade of Farmer Field Schools. He described the international livestock market and abattoir as groundbreaking, noting its potential to transform the region's economy and the veterinary profession.

Dr. Boyi praised the establishment of a dedicated Ministry of Livestock in Gombe, describing it as a forward-thinking initiative to sustain sectoral growth. He appealed to L-PRES for continued support in controlling outbreaks of Anthrax and Bird Flu, which remain a threat in parts of the country.

Notably, L-PRES recently provided 400,000 doses of Anthrax Spore Vaccine, a timely intervention that significantly bolstered animal health

services and prevented the spread of the disease. This collaboration between L-PRES and NVMA underscores a shared vision of a

thriving livestock sector, with far-reaching benefits for the state and beyond.

### Strengthening Livestock Development: Gombe L-PRES Engages LG Chairmen

The Gombe State Livestock Productivity and Resilience Support (L-PRES) Project has taken a proactive step to enhance synergy and project sustainability by engaging Local Government Chairmen under the auspices of ALGON. The meeting, held at Emerald Hilltop Hotel, Gombe, was aimed at fostering collaboration and

stated. “To address challenges faced by local milk producers, such as transportation risks and low returns, we are establishing five milk producers' cooperative societies in each Local Government Area. These cooperatives will increase profitability, generate government revenue, and create employment opportunities.”

boost revenue and improve livelihoods.

Addressing farmer-herder conflicts, the project proposes establishing strategically located control posts along major cattle routes. These posts, equipped with industrial boreholes, storage facilities, and security measures, aim to facilitate the orderly movement of livestock, particularly during critical periods like harvest season.

Professor Abubakar further revealed that the state governor has directed the re-demarcation and mapping of grazing reserves and forest areas, a process in which the L-PRES Project is actively involved. Other key interventions include breed improvement through artificial insemination involving over 400 local cows and the introduction of a livestock identification system to curb cattle rustling.



SPC, Prof. U.B. Abubakar, meeting with Local Government Chairmen

raising awareness among stakeholders about L-PRES activities within their jurisdictions.

The State Project Coordinator, Professor Usman Bello Abubakar, highlighted that L-PRES, a World Bank-supported initiative, is committed to modernizing the livestock sector and improving livelihoods. He emphasized that the six-year project has already implemented numerous interventions and established critical infrastructure across the state.

He underscored the immense livestock potential of all 11 LGAs, noting that harnessing this potential could significantly enhance the livelihoods of livestock farmers and boost Internally Generated Revenue (IGR) for the local governments. “The dairy sector presents a unique opportunity,” Professor Abubakar

According to him, the initiative includes the establishment of milk collection centres at each cooperative, ensuring efficient transportation of milk to a dedicated processing plant in Gombe. According to Professor Abubakar, the plant will extract at least 13 value-added products from milk, significantly enhancing the value chain. “Our priority is to locate this processing plant within Gombe State to maximize job creation and wealth generation,” he added.

He further said L-PRES is also heavily investing in livestock infrastructure, including the rehabilitation of markets in Lalapido, Kashere, Bajoga, and other key locations. Plans are underway for constructing an international livestock market and an ultramodern abattoir in the state capital to further

Responding on behalf of the 11 LG Chairmen, Barrister Sani Ahmad Haruna, Chairman of ALGON and Executive Chairman of Gombe LGA, commended the project's efforts. He noted that the interventions have significantly impacted grassroots communities and called for a presentation of the upcoming work plan to foster greater collaboration.

Chairmen from Akko, Kwami, and Yamaltu Deba LGAs praised the project but raised concerns about farmer-herder conflicts. “While the control posts are a great initiative,” noted the Kwami LGA Chairman, “herders often seek alternative routes to bypass these checkpoints.”

The meeting was also attended by Professor Muazu Shehu, Personal Private Secretary to Gombe State Governor, other LG Chairmen, and members of the L-PRES team.

## Food Hygiene: Gombe L-PRES Trains 300 Meat Processors/Sellers On Best Hygienic Practices For Food Safety

*...As Project Coordinator Reiterates Commitment To Transforming Livestock Value Chain*

In its commitment to improve hygiene practices and promote food safety, Gombe State L-PRES Project trained butchers, meat sellers, and processors from across the 11 Local Government Areas of Gombe State.

Speaking at the opening session of the event held at Shehu Usman Abubakar Hall of Gombe State University, L-PRES Project Coordinator, Professor Usman Bello Abubakar, emphasized the crucial role of meat processors in ensuring public health. He highlighted the need for modernization in meat handling to replace outdated practices.

“By adopting proper hygiene standards, meat processors can protect public health while enhancing their profitability,” he stated, explaining that the training aims to equip 300 participants with essential knowledge and skills for maintaining best practices in meat processing and selling.

Professor Abubakar also highlighted key L-PRES achievements, including the rehabilitation of slaughter labs in Kumo, Bajoga, and Gombe, alongside the construction of nine livestock markets across the state. He announced plans to establish a modern abattoir, an international livestock market, and a tannery to

facilitate the efficient processing of hides, skin, and other by-products for local use and export.

Reaffirming L-PRES's dedication to revitalizing the livestock value chain, Professor Abubakar expressed gratitude to Governor Inuwa Yahaya for his unwavering support, which has accelerated the project's success.

Declaring the training open, Commissioner for Agriculture, Animal Husbandry, and Cooperatives, Dr. Barnabas Malle, reiterated the government's commitment to modernizing

He urged participants to embrace the training and consider educating younger generations in animal health and related disciplines to further transform the sector.

The Chairman of the Nigeria Butchers Association, Gombe State Chapter, Sulaiman Umar, commended L-PRES for its impactful interventions. He noted that the training would significantly improve the hygiene standards of their businesses, contributing to public health.

Umar also thanked Governor Inuwa Yahaya for supporting meat sellers through initiatives like L-PRES. “We assure the government and L-PRES of our full cooperation in achieving the objectives of this programme,” he said.

The training featured insights from Professor Kabir Lawan of Ahmadu Bello University, Zaria, who highlighted the importance of hygiene in protecting communities from food-borne illnesses while boosting profitability.

Participants were equipped with tools to enhance hygiene, including rain boots, raincoats, gloves, aprons, and nose masks. Leaders from butchers' associations in Gombe North Senatorial Zone, also attended the event.



Training of meat processors on hygienic practices at Gombe State University

livestock businesses to enhance food safety and security.

Dr. Malle underscored the pivotal role of butchers and meat sellers in nutrition, public health, and economic development. “Prioritizing hygiene is not only crucial for preventing zoonotic diseases but also essential for boosting societal health and reducing healthcare costs,” he said.

## L-PRES Trains 168 Farmers On Financial Management, Cooperative Governance

The Gombe State Livestock Productivity and Resilience Support (L-PRES) Project organised a one-day workshop to equip 168 farmers with essential skills in financial management, business planning, and cooperative governance. The training aimed to strengthen cooperative management and enhance productivity in the livestock sector.

Held at Abmar Hall, Gombe, the workshop brought together representatives from dairy farmer cooperative societies facilitated by L-PRES, alongside livestock extension workers from all 11 Local Government Areas (LGAs) of the state.

In his opening remarks, L-PRES Project Coordinator, Professor Usman Bello Abubakar, emphasized

the importance of equipping participants with practical financial management skills to support the livestock value chain. The training also focused on creating basic business plans to outline goals, strategies, and financial projections for cooperatives, as well as promoting transparency, accountability, and democratic governance within the cooperatives.

“The 55 cooperative societies established under L-PRES are critical to the project's success,” Professor Abubakar noted. “Training members on relevant financial and leadership skills ensures effective and efficient implementation of project activities.” Professor Abubakar also commended Governor Muhammadu Inuwa Yahaya for his strong support in transforming the livestock sector. “The Governor's vision and commitment to modernizing the sector have been key drivers of L-PRES's achievements,” he stated.

Declaring the workshop open, the Honourable Commissioner for Agriculture, Animal Husbandry, and Cooperatives, represented by the Permanent Secretary of the Ministry,



Group photograph of livestock farmers who attended training on financial management and cooperative governance

Alhaji Muhammad Ibrahim Jalo, reaffirmed the government's dedication to supporting the livestock subsector. He urged participants to utilise the knowledge gained to modernize their businesses for enhanced productivity and profitability.

Leaders from key livestock associations, including Yahaya Modibbo, Chairman of the Miyetti Allah Cattle Breeders Association;

Ardo Cindo Abubakar, Chairman of Miyetti Allah Kautal Hore; and Ahmad Bello, State Chairman of Jonde Jam, expressed their gratitude to L-PRES for the impactful training. They pledged to apply the insights gained to improve their livestock practices.

The workshop featured expert presentations from resource persons, followed by an engaging question-and-answer session that addressed participants' concerns and provided actionable solutions.

Through initiatives like these, L-PRES continues to empower farmers and stakeholders in Gombe State, fostering sustainable growth in the livestock sector and driving economic development.

### Profitability: Gombe L-PRES Trains Livestock Farmers, Value Chain Actors On Market Information, Negotiation Skills

In a bid to empower livestock farmers and value chain actors with the tools needed to navigate modern markets, the Gombe State Livestock Productivity and Resilience Support (L-PRES) Project conducted a two-day intensive training on "Access to Market Information and Market-Oriented Negotiation Skills."

The training drew participants from all eleven Local Government Areas of the state, including livestock producers, processors, transporters, and marketers.



Participants of workshop on Business information and negotiation skills

livestock sector under the leadership of Governor Muhammadu Inuwa Yahaya. With support from the World Bank, L-PRES has implemented various initiatives, including the rehabilitation of earth dams at the

“The training is designed to equip participants with essential skills to access market information and enhance their negotiation capabilities, enabling them to secure favorable opportunities for their products and services,” Prof. Abubakar stated.

The training, facilitated by Professor Babangida Mohammed Musa from Gombe State University, covered modules on effective market information systems, negotiation techniques tailored for the livestock sector, and strategies for building strong

Speaking at the opening session, the L-PRES Project Coordinator, Professor Usman Bello Abubakar, emphasized the state government's commitment to revitalizing the

Wawa-Zange Grazing Reserve and the construction of solar-powered boreholes to provide water for livestock farmers in rural communities among others.

market relationships. Participants were encouraged to adapt to the evolving market landscape and leverage modern techniques to enhance their businesses.

Professor Babangida noted, "This training not only provides practical skills but also fosters networking among participants, allowing them to share experiences and establish connections for future

collaborations."

The event, held at White Hill Hotel, Gombe also featured responses from participants who expressed optimism that the project would have great

impact in improving their activities, assuring to applying the knowledge gained to transform their livestock businesses.

### Gombe L-PRES Organizes Workshop For 33 Livestock Extension Workers

The Gombe State Livestock Productivity and Resilience Support (L-PRES) Project recently conducted a two-day workshop for 33 livestock extension agents. The training focused on equipping agents with modern animal husbandry skills and communication techniques to improve livestock production across the state.

In his opening remarks, L-PRES Project Coordinator, Professor Usman Bello Abubakar, highlighted the importance of extension agents in educating farmers on modern practices. He assured that the training would be continuous to keep farmers updated on new developments in the livestock sector. "The project has already made significant strides, including

upgrading livestock markets in Kashere, Lalaipido, and Bajoga, and establishing the best livestock diagnostic centre in Northern Nigeria," Prof. Abubakar remarked.

focus on the training and step down the knowledge to local farmers.

He further highlighted Governor Muhammadu Inuwa Yahaya's commitment to agriculture, citing initiatives like the recent cattle vaccination campaign and the allocation of land for a federal veterinary hospital along Liji.

Participants were exposed to a range of topics through paper presentations and practical sessions, equipping them with the tools needed to modernize livestock farming practices.



Cross-section of participants at the training of livestock extension workers

The State Commissioner for Agriculture, Animal Husbandry, and Cooperatives, Dr. Barnabas Malle, represented by the Permanent Secretary, Dr. Ibrahim Yakubu Usman, commended L-PRES for the initiative. He urged participants to

With initiatives like these, L-PRES continues to play a critical role in positioning Gombe State as a leader in livestock productivity and resilience in Nigeria.

### One Health: Gombe State Enhances Health Security, As L-PRES Trains 45 Officers

In a strategic move to tackle emerging healthcare challenges, the Gombe State Government, through the L-PRES Project, has trained 45 One-Health officers on the National Action Plan for Health Security (NAPHS). This initiative is aimed at combating zoonotic diseases and antimicrobial resistance.



Cross-section of One-Health Officers during their training

The five-day training, first of its kind in Gombe State, brought together professionals from human, animal, and environmental health sectors to

address critical health issues and develop integrated strategies.

Governor Muhammadu Inuwa Yahaya, represented by Dr. Barnabas

Malle, the Honorable Commissioner for Agriculture, Animal Husbandry, and Cooperatives, expressed the state government's commitment to addressing the state's healthcare challenges through a collaborative, multidisciplinary approach.

In his remarks, the governor highlighted the importance of unity across health sectors. "A unified and interdisciplinary approach is essential to tackling our current health

challenges. By collaborating, we can create sustainable solutions and promote a safer, healthier environment for both humans and animals.”

He also reaffirmed the state government's dedication to One Health initiatives, including annual vaccination campaigns aimed at controlling animal diseases, preventing human transmission, and improving food safety and livestock productivity.

Alhaji Sanusi Abubakar, the National Coordinator of the L-PRES Project, represented by Professor Usman Bello Abubakar, the Gombe L-PRES Project Coordinator, emphasized the holistic approach of the One Health concept. He noted, “One Health recognises the interconnectedness of human, animal, and environmental health, encouraging collaboration to address emerging health challenges and improve livestock productivity.”

Dr. Ibrahim Yakubu Usman, Permanent Secretary of the Ministry

of Agriculture, Animal Husbandry, and Cooperatives, acknowledged the L-PRES Project's role in revitalizing the state's livestock sector, citing the governor's continued support for annual vaccination campaigns.

Professor Junaidu Kabir from ABU Zaria commended the training as a critical step in enhancing the state's capacity to prevent and respond to health emergencies, especially zoonotic disease

## Gov Inuwa Leads 2024 Annual Livestock Vaccination Campaign As Gombe L-PRES Highlights Key Achievements

The Gombe State L-PRES Project Team, led by its Coordinator, Professor Usman Bello Abubakar, joined Governor Muhammadu Inuwa Yahaya, CON, at the flagging-off ceremony of the 2024 Annual Vaccination Campaign against Contagious Bovine Pleuropneumonia (CBPP) in cattle, Peste des Petits Ruminants (PPR) in sheep and goats, and anthrax in livestock across the state. The event took place in the Tumfure-Bashar area of Akko Local Government.



Governor of Gombe State flagging off the 2024 livestock vaccination exercise

Speaking at the event, the State Coordinator highlighted the collaborative role of the L-PRES Project in the vaccination exercise, noting that the Project works hand-in-hand with the Ministry of Agriculture, Animal Husbandry, and Cooperatives to fulfill the mandate entrusted to them by Governor Muhammadu Inuwa Yahaya.

He emphasized that the project has supported the ministry with 400,000 doses of Anthrax Spore Vaccines (ASV) from the National L-PRES office as part of efforts to bolster animal health services in the state. This support also includes the construction of a livestock diagnostics laboratory at the Tashan

Dukku cattle market, a crucial step towards meeting international requirements for the export of healthy beef to international markets.

Professor Abubakar stated that the project has embarked on upgrading livestock markets across the state to position them as key outlets for the supply of livestock to the planned International Livestock Market and Ultra-Modern Abattoir, which is expected to commence operations soon. He further noted that the rehabilitation of slaughter slabs in Gombe, Kumo, and Bajoga has been completed and handed over to beneficiaries. Additionally, the award process for the upgrade of livestock and livebird markets in Lalaipido, Bajoga, Kurugu, and Kashere, located in Shongom, Funakaye, Kwami, and Akko Local Government Areas, respectively, has already commenced.

To fulfill the promise made by the state Governor in finding a lasting solution to the long-standing conflicts between farmers and herders in the state, the L-PRES Project, on August 21st, signed a historic contract for the Resurvey and Re-demarcation of seven (7) grazing reserves and thirty-seven (37) international and national cattle routes.

This initiative also includes the establishment of control posts at the borders to regulate livestock movement in and out of the state.

In his address, Governor Muhammad Inuwa Yahaya emphasized the commitment of his administration to controlling animal diseases to boost both meat and dairy production in the state. He reiterated the importance of the vaccination exercise, stating that it aligns with his administration's vision of transforming the livestock sector into a modern industry that adheres to international standards and best practices. This transformation is crucial for positioning livestock products as a significant source of foreign exchange for the state.

The Governor noted that to realize this ambitious programme, the state must embrace the annual vaccination campaign to control the spread of these diseases, which have long

hindered the growth of the livestock industry in the state, causing severe economic losses due to high mortality rates among livestock.

Dr. Barnabas Malle, Commissioner for Agriculture, Animal Husbandry, and Cooperatives, revealed in a recent estimate that Gombe State is home to approximately 3.6 million livestock, emphasizing the critical role livestock plays in the state's economy towards enhancing food security and generating income vital for the state's socioeconomic development.

Dr. Ibrahim Bomoi, State Coordinator of the Federal Ministry of Agriculture in Gombe, also noted the significance of the vaccination exercise in maximizing livestock reproduction. He commended Governor Inuwa Yahaya's strategic leadership for supporting the production of healthy animals for human consumption.

In his remarks, ModibboYaya, leader of the Miyetti Allah Cattle Breeders Association in the state, expressed gratitude to Governor Inuwa Yahaya

for the consistent conduct of the annual vaccination campaign. He stated that herders in the state now feel a sense of belonging, recognizing the Governor's unwavering commitment to the welfare of pastoralists.

The highlight of the event was the symbolic vaccination performed by the Governor to mark the official commencement of the exercise.

## FLAGSHIP PROJECTS AND FUTURE PROSPECTS

### Gombe State Govt Earmarks 41 Hectares For International Livestock Market, Ultra Modern Abattoir



SPC, Gombe L-PRES (left), DG GOGIS, Dr Kabiru Usman (right), and other stakeholders during an engagement meeting on the allocation of 41 hectares of land for the L-PRES Project

**G**ombe State Government through Gombe Geographic Information Systems (GOGIS) has earmarked 41 hectares of land for construction of Gombe first ever international livestock market and ultra-modern abattoir to be constructed in the state capital.

The Director General Gombe Geographic Information Systems (GOGIS) Dr Kabiru Usman Hassan made this known during a stakeholders' engagement meeting with community leaders, local government officials and owners of farmlands and property at the proposed site of the projects at Jauro Abare Village.

The Director General who was represented at the meeting by the Director Lands Hajiya Zainab Salisu to discuss modalities for acquisition and compensation for farmlands for the said projects, assured that property owners would be fully compensated.

Welcoming participants at the event the Secretary Gombe Local Government Areas Alhaji Aliyu Mohammed Dawakin Gombe said the purpose of the meeting was to create awareness and solicit public support for the projects.

He commended the State Governor Muhammad Inuwa Yahaya for his foresight to introduce such ambitious projects in Gombe State that hold great potentials for investment and job creation in the livestock industry.

The secretary explained that the state government will come up with a compensation plan for owners of farmlands and urged them to consider Gombe first, by making sacrifices where necessary considering the importance of the projects to create jobs opportunities for youth in their communities.

In a brief overview, State Coordinator Gombe L-PRES Project, Professor Usman Bello Abubakar hinted that

the international livestock market will serve as a regional hub for livestock businesses, equipped with modern facilities and conveniences including banks and accommodations for prospective clients to ease business activities and generate revenue for the state.

He said the Ultra Modern Abattoir on the other hand will be equipped with the latest technology to improve production, processing, marketing and transportation of livestock products and services to both national and global markets in line with the focus of the L-PRES Project which seeks to introduce modern livestock practices in line with global trends to maximize beef and dairy production. In his remarks, the Land Officer Gombe Local Government Mallam Ibrahim Mohamed said, "the land belongs to the government, owned by people but government will collect it to serve public interest" He clarified that, in due course the government will come up with a formula to assess

every piece of land and make compensation to owners accordingly and urged them cooperate to ensure success of the exercise.

In a remark, the Chairman Gombe Local Government Barrister Sani Ahmad Haruna appreciated people of Jauro Abare community for the warm reception accorded to stakeholders at the meeting.

He commended the State Governor Muhammad Inuwa Yahaya for the choice of Gombe LGA in citing the projects and attributed it to its central location and accessibility, pledging to stand firmly to ensure its successful implementation.

Community leaders including the Overseer Gombe Senior District Office, Alhaji Shattima Usman

(Shatiman Gombe), and the Village Head of Jauro Abare, Alhaji Sale Adamu Damji, both commended the State Governor for introducing such a laudable project in Gombe State and assured him of their support at all times.

## Gombe L-PRES Unveils 41-Hectare Site Plan For International Livestock Market, Ultra-Modern Abattoir

*...Engages Stakeholders for Collaborative Planning, Seamless Implementation*

The Livestock Productivity and Resilience Support (L-PRES) Project has secured a 41hectare site for establishment of an ultra-modern abattoir and international livestock market, from the Gombe State Government, under the leadership of Governor Muhammadu Inuwa Yahaya, CON, a project designed to revolutionize the state's livestock value chain.

The government, through the L-PRES Project, has actively engaged key stakeholders in the livestock-related businesses in perfecting the site plans for the ambitious project.

Presenting the comprehensive site plan at the L-PRES Office in Gombe, the State Coordinator of the Project, Professor Usman Bello Abubakar, said that the stakeholder engagement aligns perfectly with Governor Inuwa Yahaya's philosophy of inclusive governance, which prioritizes the active participation of all citizens. "His Excellency, as a leader who believes in inclusive governance, instructed us to engage all stakeholders to ensure that their needs and valuable input are incorporated into the site plan," Professor Abubakar stated.

The coordinator observed that the livestock sector has been significantly



Unveiling of the site plan for the establishment of the Livestock Market and Ultramodern Abattoir

neglected for a very long time, with a disproportionate focus on crop production at the expense of animal husbandry. However, with a renewed commitment and strong political will from both the Gombe State government and the Federal Government, this narrative is poised to change.

"The world has evolved, and modern approaches to livestock production are now essential. We must modernize our practices and embrace innovative techniques to optimize this vital sector," he noted, expressing dismay over the significant losses incurred by Northern states, despite their status as major producers of livestock.

"To address these challenges and maximize the economic benefits for our people, Governor Inuwa Yahaya, as Chairman of the Northern Governors' Forum, is spearheading efforts to harness the immense potential of the livestock sector," he explained.

"By establishing modern abattoirs within our region, we can slaughter animals locally, process the meat and other products, and efficiently package and transport them to both domestic and international markets," he added.

The State Coordinator explained that the proposed site plan for the international livestock market and the ultramodern abattoir incorporates all necessary facilities and infrastructure characteristic of modern facilities in developed countries.

The site encompasses a total area of 41 hectares and will feature dedicated market spaces for various livestock species (cattle, sheep and goats, poultry) and a dedicated beef, ram, and goat fattening hubs.

The ultramodern abattoir, occupying 4 hectares of land, will be equipped with state-of-the-art infrastructure, including proper water supply, cooling systems and storage facilities, a dedicated hide and skin/tannery unit, and a leather industry.

Furthermore, the site will incorporate essential support facilities such as a loading and offloading bay, a veterinary clinic and quarantine area, a stock feed market, and a comprehensive waste treatment and management unit, among others.

To ensure a conducive and secure environment, the site will also include a motel, a fire station, a police station, a bank branch, an administrative complex with ample parking lot and necessary utilities.

To enhance market access and facilitate trade, the International Livestock Market will be digitized, enabling online access and facilitating digital marketing initiatives.

Furthermore, a dedicated radio station will be established to effectively promote livestock marketing opportunities both within Nigeria and internationally.

Professor Abubakar explained that the L-PRES with the support of Gombe State Government conducted a study tour of tanneries in Kano,

recognizing the potential for replicating successful models in Gombe.

He emphasized that with the establishment of this ultra-modern abattoir and livestock market, coupled with the state's available resources, the leather industry in Gombe is poised for significant growth.

"We envision a future where Gombe not only meets its domestic leather product needs but also becomes a major exporter of high-quality leather goods, including bags, shoes, belts, and other products," he stated.

The project will create employment opportunities for the state indigenes as the employment of local residents will be prioritized within the livestock market and the abattoir.

During the interactive session, participants commended the efforts of Governor Muhammadu Inuwa Yahaya and the L-PRES Project for their proactive interventions aimed at developing the livestock sector.

"We are eternally grateful for these interventions to develop and modernize our businesses. However, we respectfully request that the L-PRES consider increasing the hectares allocated for the cattle market", a participant commented.

The engagement was attended by representatives from the Sheep and Goat Marketers Association, the Livestock Feed Dealers Association, the Butchers and Meat Sellers Association, the Poultry Sellers Association, the Cattle Marketers Association and the Hide and Skin Dealers.

### Gombe L-PRES Opens Bid For Multi-Billion Naira Ultramodern Abattoir, Assures Of Fair Play

A few days after unveiling the plan for the ambitious Gombe Ultramodern Abattoir, the Gombe L-PRES has opened bids for the construction of an ultramodern abattoir in its renewed commitment to boost and modernize livestock processing and marketing in Gombe State. Speaking during the event, the State Coordinator, Professor Usman Bello Abubakar, reaffirms L-PRES's commitments to transparency and accountability in all its activities.



Gombe L-PRES Coordinator presiding over the opening session of the bidding process for the Gombe Ultramodern Abattoir

to positively impact the lives of his people and improve their livelihoods. "Our farmers have faced numerous challenges, often bearing significant risks with limited returns. We

"On December 19th last year, we advertised for bids on national dailies such as Vanguard and Blueprint. After a four-week period, ten companies expressed interest, but only seven submitted the necessary documentation on time," he explained.

The Project Coordinator highlighted that the abattoir will be a pioneering facility in the state, equipped with cutting-edge technology comparable to any world-class facility.

He commended the political will and strong supports the project has received from the state governor, which he said has been instrumental in the project's remarkable progress.

"We are fortunate to have a Governor with a clear vision and foresight. His consistent support and guidance have been crucial in bringing this project to fruition," Professor Abubakar stated.

The Coordinator explained that the project was born from Governor Muhammadu Inuwa Yahaya's vision

recognised the need to transform this sector, modernize our animal product handling practices, and create a sustainable and profitable industry that drives economic development," he elaborated.

Professor Abubakar assured all potential bidders of equal opportunity to participate, noting that even international companies had shown interest in the project despite its national scope.

"This state-of-the-art abattoir will not only benefit Gombe State and the Northeast Region, but also the entire nation. We envision exporting high-quality products produced here to international markets," he stated.

He announced that after the bidding, the Evaluation Committee would assess all bid documents submitted by participating firms, adhering strictly to the established criteria.

The Committee will then select the winning bid and duly notify all

participants, providing clear and transparent reasons for their selection or rejection. The bidders would have a two-week grace period to respond before the finalization of the contract award.

The State Coordinator appreciated all bidders for their interest, urging them to accept the evaluation committee's decision with good faith. He assured them of a transparent and impartial evaluation process in accordance with World Bank procurement standards and guidelines.

In his remarks, the Honourable Commissioner, Ministry of Agriculture and Cooperatives, Dr. Barnabas Malle who spoke through the Permanent Secretary of the ministry, Muhammad Ibrahim Jalo, commended the transparency of the bidding process, describing it as "open, just, and fair."

He further praised the L-PRES Project for its dedication to modernizing the livestock subsector in Gombe State, emphasizing that the

objectives of the L-PRES perfectly align with the vision of the Inuwa Yahaya administration, which prioritizes peace, improved livelihoods, and enhanced resilience among the people.



The L-PRES Procurement Officer (standing) during the bidding process for the construction of the Ultramodern Abattoir

He assured the gathering of the state government's continued commitment to supporting the construction of the ultramodern abattoir and other ambitious projects undertaken by the L-PRES.

Coordinating the bidding process, the Procurement Officer of L-PRES, Usman Bello outlined the evaluation process. He presented the major information of every bidding company before all other contenders. Responding on behalf of the bidders,

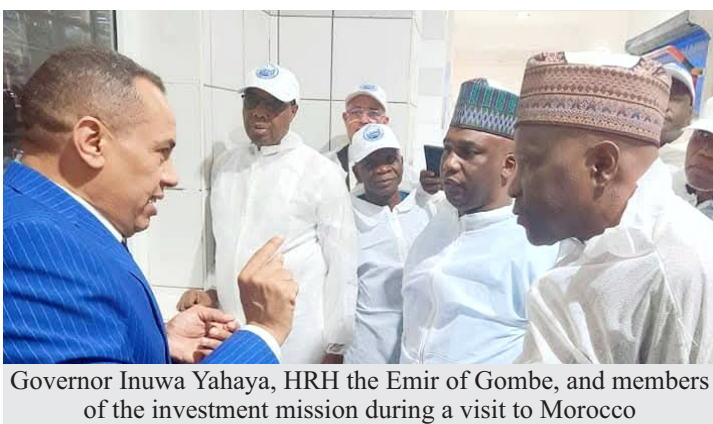
Musa Ayuba from Lubell Nigeria Ltd expressed gratitude for the opportunity to participate in the bidding process.

He assured the L-PRES that their companies are committed not only to successfully executing the project but also to contributing meaningfully to the development of the state and the nation.

One of the ten companies that have initially shown interest arrived late, after the bidding process had already commenced. They were disqualified for violating the established bidding procedures.

The seven companies that participated in the bidding were: Nuellika Infinity Ltd from Abuja, Domesshade Reality Ltd from Gombe, ABSHU General Merchandise Ltd from Kano, Mahadi Services and Resources Ltd from Abuja, Triple Tech Consult and Properties Nigeria Ltd from Gombe, Stable Ethics Ltd from Bauchi, and Lubell Nigeria Ltd from Abuja.

## Gombe L-PRES Sets Sights On Thriving Dairy And Beef Industries After Productive Morocco Mission



Governor Inuwa Yahaya, HRH the Emir of Gombe, and members of the investment mission during a visit to Morocco

The Gombe State Livestock Productivity and Resilience Support L-PRES Project coordinator professor Usman Bello Abubakar was part of Governor Muhammadu Inuwa Yahaya's strong delegation to the North African Nation of Morocco on a successful

Gombe State towards building a robust and more sustainable agro-economy in the state.

The week-long trip, held from June 5th to 12th, 2024, included a special visit to COPAG Dairy and Beef Farm in Taroudant, Agadir. The visit aimed

mission to understand modern agricultural practices, technologies, and approaches to advancing agro-allied industrialization and businesses with a view to implementing the same in

to gain valuable insights into dairy and beef farming practices, explore potential partnerships, and identify best practices to boost Gombe's dairy and beef industries under the L-PRES Project.

The State L-PRES Coordinator said the project focused on modernizing the entire livestock value chain, improving resilience and productivity in the sector, explaining that the Morocco mission yielded a wealth of knowledge across the entire dairy and beef value chain.

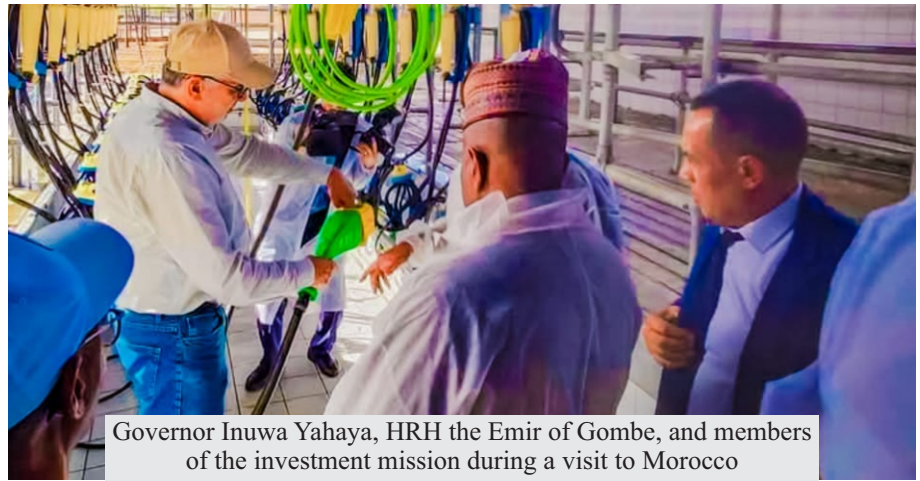
"Participants gained insights into improved techniques for breeding and selecting high-yielding dairy cattle, implementing effective feeding and nutrition programmes, and utilizing modern milking and

herd management practices. Disease prevention and control strategies were also a key focus area, ensuring the health of the dairy herd and the quality of milk production," he noted. Beyond production, the mission delved into efficient milk processing and packaging methods, crucial steps in getting high-quality dairy products to consumers. Strategies for cheese and butter production were explored, offering Gombe the potential to diversify its dairy offerings. Effective marketing strategies and establishing robust distribution channels were also examined, ensuring Gombe's dairy products reach a wider market.

The mission further explored best practices for beef production, covering breeding and genetics for high-quality beef cattle, proper feeding and nutrition programmes, effective cattle husbandry and management techniques, and modern methods for slaughtering, processing, and marketing beef products, the foundation of which has been laid by the state government through the L-PRES Project.

The mission recognised the importance of farmers' cooperatives in fostering a successful dairy and beef industry. Significant focus was placed on understanding how these cooperatives in Morocco are structured and managed. The governance models, membership processes, and decision-making within these cooperatives were also explored.

Additionally, it examined the advantages and challenges associated with cooperatives, such as economies of scale, improved market access, and enhanced collective bargaining power. Understanding these aspects



Governor Inuwa Yahaya, HRH the Emir of Gombe, and members of the investment mission during a visit to Morocco

will be invaluable in establishing similar organizations in Gombe State, empowering local farmers through collaboration and shared success.

The Gombe State Government isn't wasting any time capitalizing on the successful study mission to Morocco. To ensure long-term growth in the dairy and beef industries, a comprehensive action plan has been established, prioritizing several key initiatives.

**Roadmap Development:** A detailed plan was formulated, incorporating the valuable knowledge gained from the Moroccan experts. This roadmap serves as a blueprint for progress, addressing every aspect of dairy and beef production in Gombe State, ensuring a holistic approach to development. This roadmap serves as the foundation for the action plan's various initiatives.

**Building Partnerships for Success:** Recognizing the importance of collaboration, the plan actively pursues discussions with COPAG and other Moroccan stakeholders. These potential partnerships offered Gombe access to invaluable expertise and resources. Collaboration with

experienced players in the dairy and beef industries has provided a significant boost to Gombe's development efforts.

**Empowering Local Farmers through Cooperatives:** Establishing farmers' cooperative organizations is another crucial element. These cooperatives strengthen the dairy and beef industries by fostering collaboration and bargaining power amongst producers. By working together, farmers can improve their efficiency, secure better deals on supplies, and have a stronger voice in the marketplace. This empowerment is essential for the long-term viability of Gombe's dairy and beef sectors.

**Investing in Knowledge and Skills:** Training programmes are being organised for both farmers and extension agents. These programmes cover various aspects of dairy and beef production, processing, and marketing. Equipping local stakeholders with the necessary skills is essential for their success in the industry. A more knowledgeable and skilled workforce formed the backbone of a thriving dairy and beef sector in Gombe State.

### Aftermath of Gov. Inuwa's Morocco Mission: Gombe L-PRES Establishes 55 Farmers Cooperatives, Milk Collection Centres

In its bid to boost livestock production and economic growth in Gombe State, the state government has unveiled plans to establish 55 milk collection centres across the 11 local government areas of the state.

This was disclosed by the Gombe State Coordinator of the Livestock Productivity and Resilience Support (L-PRES) Project, Professor Usman Bello Abubakar, during a one-day stakeholders' engagement programme organised by the Gombe L-PRES Coordination Office in Gombe.

Professor Abubakar said the establishment of these collection centres would enable milk producers to maximize profits while minimizing transportation and other associated risks.

"These milk collection centres could employ at least 15-25 people,



Governor Inuwa Yahaya, HRH the Emir of Gombe, and members of the investment mission during a visit to Morocco

contributing to job creation, income improvement, and stimulating growth across various sectors of the economy," he said.

"Following the establishment of these centres, a milk processing plant will be constructed to produce approximately 13 milk by-products." He added.

The coordinator emphasized the importance of functional and active livestock cooperative societies to facilitate the implementation of L-

PRES and other livestock projects.

"We will form 55 milk producing cooperative societies, five in each of the 11 LGAs of the state. These cooperatives will be instrumental in executing subsequent project activities, such as the upcoming artificial insemination exercise aimed at crossbreeding improved breeds with local ones to enhance productivity," he explained.

The decision to undertake these projects was informed by the

successful outcome of Governor Muhammadu Inuwa Yahaya's Morocco mission, which focused on agriculture and investment, including livestock.

The coordinator commended Governor Muhammadu Inuwa Yahaya for reviving the previously neglected grazing reserves and cattle routes in the state.

"His Excellency has issued a directive for the demarcation of cattle routes and grazing reserves in the state following the receipt of reports from the established committees," he said.

This, according to Professor U.B. Abubakar will promote peaceful coexistence between herders and farmers while ensuring adequate pasture for livestock.

Stakeholders were briefed on the requirements for establishing cooperatives and given a two-week deadline to provide necessary information for the full implementation of subsequent activities and programmes.

### **Gov Inuwa Approves Recruitment Of Veterinary Professional Workers To Strengthen Animal Health Services**

*...As Gombe State Selected to Pilot L-PRES Private Veterinary Practice Programme*

**G**ombe State Governor, Muhammadu Inuwa Yahaya, CON, has approved the employment of veterinary professional workers to strengthen livestock healthcare service delivery and ensure the sustainable impact of the significant investments being made in the livestock sub-sector in Gombe State.

The approval follows a request from the National Coordination Office of the Livestock Productivity and Resilience Support (L-PRES) Project, which has selected Gombe as one of the pilot states for the implementation of the Private Veterinary Practice (PVP) Programme under a Public-Private Partnership (PPP) framework.

Governor Inuwa Yahaya



This initiative aims to expand veterinary services to rural and hard-to-reach communities, ensuring improved animal health, increased productivity, and enhanced

commercialisation of the livestock sector.

The programme offers an opportunity for participating states to engage

veterinary professional workers who will provide animal healthcare services across the state.

To enhance service delivery, the veterinary professional workers will be provided with motorcycles for mobility across remote areas, complete veterinary diagnostic kits for effective service delivery, and essential veterinary drugs to support disease surveillance and treatment.

The workers will also benefit from specialised training in livestock healthcare and receive monthly salaries to ensure their commitment to sustainable service delivery.

The recruitment will be phased over three years, with additional veterinary practitioners engaged annually to expand coverage and improve livestock health services.

According to the L-PRES National Project Coordinator, Sanusi Abubakar, the PVP Programme is designed to institutionalize Public-Private Partnerships in veterinary services, ensuring sustainable, structured, and quality-driven animal healthcare delivery.

The initiative will focus on animal health services, including disease surveillance and vaccination,

enhanced disease reporting mechanisms for timely intervention, and strengthening livestock value chains, including processing, transportation, and trade.

In a letter addressed to the Governor, the L-PRES National Coordinator emphasized that Nigeria has not fully harnessed the potential of private veterinary service providers due to the absence of a harmonized framework for engagement.

"This programme will address that gap by leveraging private sector expertise and government support to expand veterinary services, improve livelihoods, and boost economic growth in the livestock sector," the letter read in part.

The Gombe State Government, in collaboration with L-PRES, has committed to funding the programme under its Annual Work Plan and Budget, with reimbursement provided upon meeting key Performance-Based Conditions.

The Gombe State L-PRES Project Coordinator, Professor Usman Bello Abubakar, described this initiative as a transformative step for animal healthcare in Gombe.

He noted that it will not only ensure

access to veterinary services but also enhance food safety, increase productivity, and create employment opportunities for trained veterinary professionals.

These interventions come on the heels of significant investments by the Gombe State Government in revitalizing the state's veterinary clinics, rehabilitating livestock and livebird markets, renovating abattoirs, and concluding plans for constructing an international livestock market, a fattening hub, a leather factory, and an ultra-modern abattoir.

Additionally, the state is currently resurveying and re-demarcating 37 cattle routes and 8 grazing reserves while constructing dams and boreholes for farming communities to provide pasture and water supply for livestock. These efforts aim to prevent recurring farmer-herder conflicts, foster peaceful coexistence, and stimulate economic growth.

With these strategic interventions, Gombe State is set to become a model for veterinary service delivery in Nigeria, fostering a more productive, profitable, and resilient livestock industry.

### Gombe L-PRES Revalidates Dairy Cooperatives for Enhanced Production

The Gombe State Livestock Productivity and Resilience Support (L-PRES) Project has commenced the revalidation and certification of dairy value chain cooperatives across all Local Government Areas (LGAs) in the state.

This strategic initiative aims to strengthen existing cooperatives, ensuring they effectively benefit from project interventions while driving sustainable dairy sector growth.

Inspired by Governor Muhammadu Inuwa Yahaya's investment mission to Morocco, the exercise seeks to establish



Gombe L-PRES Team meeting with Traditional Rulers and Gombe Local Gov't. Officials during the revalidation exercises

structured dairy clusters that will support services, including artificial insemination, improved breeding

techniques, and access to milk collection infrastructure.

L-PRES State Project Coordinator, Professor Usman Bello Abubakar, emphasized the crucial role of cooperatives in enhancing milk production, ensuring quality control, and linking farmers directly with processors.

"By organizing dairy farmers into structured groups, we aim to boost productivity, increase profitability, and build a more resilient dairy sector in Gombe State," he stated.

The revalidation team comprising L-PRES Technical Team and the Head of Planning, Research, and Statistics from the Ministry of Agriculture, Animal Husbandry, and Cooperatives, conducted on-site visits to each LGA to collect biodata from cooperative members.

The revalidation process involves thorough vetting to ensure that all cooperatives meet established criteria and are free from any impediments that could hinder project implementation.

This initiative will pave the way for

The revalidation team visited all emirates and met with the respective local government chairmen to seek their support and cooperation.

All of the Local Government Council Chairmen expressed happiness with the activity and pledged their full support towards achieving the target.



Gombe L-PRES Team during the revalidation exercises

the establishment of milk collection centres within cooperatives, facilitating proper storage, distribution, and transportation to processing facilities.

By streamlining these processes, L-PRES aims to modernize the dairy value chain, minimize post-harvest losses, and enhance commercialization opportunities for smallholder farmers.

Ultimately, this exercise will improve coordination, strengthen cooperatives, and support the seamless implementation of L-PRES dairy programs, positioning Gombe State as a leading hub for dairy production in Nigeria.

## BENEFICIARIES' TESTIMONIES ON VARIOUS L-PRES PROJECTS & ACTIVITIES

### L-PRES One Health Training



“This workshop has been an incredibly important gathering, bringing together professionals from various sectors, particularly those in the health industry. It has provided a unique platform for veterinarians, environmentalists, and other experts to collaborate on critical health issues.

One key take-away from this engagement is the need for a unified approach to health challenges. Diseases do not differentiate between humans and animals—bacteria and viruses affect all living beings. Therefore, it is imperative that professionals across different health sectors work together to tackle these challenges effectively.

Our first step is to strengthen collaboration by fostering a multidisciplinary approach to healthcare. Each sector brings valuable insights and expertise, and by working together, we can enhance the quality of health service delivery. Secondly, the sharing of information is crucial. By keeping all stakeholders informed and updated, we can respond swiftly to emerging health threats and improve overall public health outcomes.”

**Dr. Adamu Boyi Kumo, Chairman,**  
Nigerian Veterinary Medical Association

## The Impact Of Various Projects And Programmes Executed By Gombe L-PRES



“The livestock transformation drive of Governor Muhammadu Inuwa Yahaya has taken shape, and we are seeing real impact on livestock farmers and the economy at large. Before L-PRES, the livestock sector in Gombe was struggling due to lack of pasture, blocked cattle routes, and water shortages.

Today, we have boreholes, grazing reserves, and better management systems. L-PRES has fully engaged us in policy-making and program formulation. We are always consulted, and our inputs are valued in every decision."Sensitization and awareness campaigns have helped us embrace modern livestock practices. Changing the mindset of pastoralists is not easy, but L-PRES has

made great progress. The provision of solar-powered boreholes in key livestock clusters has greatly reduced migration and conflicts. Water is now available for both animals and the community. The establishment of milk collection centers in Funakaye, Nafada, and Kwami is a game-changer. Our women and children will no longer risk their safety hawking milk in markets. L-PRES has introduced artificial insemination with exotic cattle breeds to improve dairy production.

This free initiative will significantly boost productivity and profitability for our farmers. For the first time in northern Nigeria, an international livestock market and an ultra-modern abattoir are being developed. This will expand trade and create new opportunities for livestock farmers. Thanks to L-PRES and Governor Inuwa Yahaya, farmer-herder conflicts have drastically reduced. Structured grazing reserves, cattle route re-mapping, and conflict resolution committees have made a big difference. We are grateful to His Excellency Governor Inuwa Yahaya and L-PRES Coordinator Prof. Usman Bello Abubakar for their vision and commitment. If this continues, Gombe will become a model for livestock development in Africa.”

**Modibbo Yahaya, Chairman MACBAN,  
Gombe State Chapter,**

## Impact Of Gombe L-PRES Projects On Butchers, Meat Processors And Sellers



“We are truly grateful to Governor Muhammadu Inuwa Yahaya and L-PRES Coordinator Prof. Usman Bello Abubakar. The L-PRES project has completely transformed our business—this is an overhaul we have never witnessed in the history of

State. For the first time, modern abattoirs are being constructed in all 11 Local Government Areas of Gombe State. This is a groundbreaking achievement for butchers and the entire livestock industry. L-PRES has trained 300 selected butchers across the state on hygiene and zoonotic diseases. This training, conducted by a veterinary doctor from Kaduna, has greatly improved our knowledge and practices. Before L-PRES, our abattoirs were in terrible condition—most had no roofing, and we struggled with water shortages. Today, the situation has changed completely, and we are working in better conditions. The

renovation of the Dukku abattoir has given it a new, improved look. Butchers there are now operating in a clean, modernized environment, thanks to L-PRES.

Our profits have doubled because of the transformation L-PRES has brought. Traders from Southern Nigeria prefer livestock from Gombe due to the improved handling and quality assurance we now provide. Plans are underway for the construction of an ultra-modern abattoir in Gombe. Many states are hoping for such a facility, but we are privileged to have it coming to us first. The establishment of an international livestock market is a game-changer.

This will boost business for livestock traders, benefit all citizens, and increase state revenue. Many butchers who left Nigeria for better opportunities abroad will return home when these modern facilities are completed. Gombe will become a hub for livestock trade and processing. I urge my fellow butchers to remain law-abiding and focus on their business. These new abattoirs and the international livestock market are for our benefit—we must protect and maximize them. We pray for continued success for Governor Muhammadu Inuwa Yahaya. His leadership is transforming our industry, and we look forward to more achievements before the end of his administration.

**Suleman Umar, Chairman,  
Gombe State Butchers Association**

### Fodder Seed Distribution



“I want to sincerely appreciate L-PRES Gombe for their generous support. Through this blessed agency, we have received donations of animal feed seedlings, which we are now cultivating to improve the health and productivity of our livestock. This initiative has truly made a difference for us, and we are highly satisfied with the leadership of the L-PRES Coordinator and the Government of Gombe State

under Governor Muhammadu Inuwa Yahaya.

As a direct beneficiary, I can confidently say that this intervention will go a long way in reducing conflicts between farmers and herders. By growing our own animal feed, herders can sustainably provide for their livestock, while farmers can focus on their crops without disputes over grazing land.

L-PRES Gombe has done a wonderful job by providing us with these seedlings, and we hope that future distributions will be even larger so that more people across Nigeria can benefit. We truly appreciate this gesture, and as they have explained to us, this initiative will not only promote peace but also ensure that everyone—farmers and herders alike—can operate independently. With improved animal nutrition, we will see healthier livestock, better meat quality, and increased milk production.

If we continue to cultivate these grass seedlings, it will bring peace and harmony between farmers and herders. If I, as a herder, grow my own grass, there will be no need to

### Kumo Abattoir Rehabilitation

“One of the greatest benefits we have received from L-PRES Gombe is the rehabilitation of our abattoir in Kumo Town, Akko Local Government. For over 17 to 18 years, we struggled to get this project done, but it never materialized - until L-PRES stepped in and made it a reality.

Before the intervention, our abattoir was in a terrible state. We were working under extremely poor conditions, processing meat on bare ground, which was both unhygienic and unsafe. But today, thanks to L-PRES Gombe, we now have a modern, well-equipped facility

that ensures the production of clean, healthy meat for our people.

Everything necessary for a standard abattoir has been put in place - proper flooring, drainage systems, and modern slaughtering equipment. This transformation is not just about convenience for us but also about improving food safety and hygiene for the entire community. We sincerely appreciate L-PRES Gombe and its leadership for this incredible support. This project has changed our lives and improved the quality of meat we supply. May God bless and reward them abundantly.”

**Bello Sarkin Fawa, Beneficiary  
From Kumo Town, Akko LGA**

### Water Borehole Installation



“We are truly grateful to L-PRES Gombe for installing a water borehole for us. May the Almighty God bless and reward them abundantly. This water has greatly improved our lives, providing clean and reliable access not just for us but also for our animals.

Before now, water was a major challenge, but today, thanks to L-PRES, we have a steady supply, and our livestock are also benefiting from

it. In addition, we are now enjoying the services of our newly improved abattoir, which has made meat processing and hygiene much better.

We sincerely appreciate L-PRES Gombe and its Coordinator for their dedication to supporting our community. This initiative has made a real difference, and we pray for continued success in their efforts.”

**A Herd Woman from  
Kalmai, Alhaji Kumo Village**

## The Earth Dam Dredging And Desilting In Wawa-Zange Grazing Reserve



a f f e c t i n g            o u r

As you can see, our dam is now full of water. We thank God for this intervention. Professor Bello of L-PRES has truly saved us from calamity. We have been battling acute water scarcity, which subjected us to immense hardship and suffering, significantly affecting our livestock.

rescuing our lives and livelihoods. If the lack of water had continued, we would have been forced to leave and migrate elsewhere in search of water.

Prof. Usman has indeed upheld the trust of leadership and is performing excellently. We remain grateful to him and the entire Gombe L-PRES team.

There have been about five attempts at different times to rehabilitate the dam, but none have succeeded like this one. In fact, there has never been such a serious, rigorous, and ambitious project like this for all three dams here in Wawa-Zange.

We also appeal to L-PRES to look into the situation of other ponds and dams and consider resuscitating them to further support our lives.”

**Hashimu Umar**

This dam is our lifeline—we depend on it for survival. Reviving and dredging it to collect rainwater is akin to

## Impact of L-PRES And Governor Muhammadu Inuwa Yahaya's Support For Herders



There has never been a governor who has genuinely cared for herders like Governor Muhammadu Inuwa Yahaya. He does not only respond to our requests but also goes beyond, adding initiatives that further improve our well-being. No government in the history of Gombe

and timely decision. His vast experience and deep understanding of the challenges faced by herders have made a significant impact. Under his leadership, Gombe State is witnessing unprecedented development in livestock management and pastoral support. We are truly grateful for his dedication and hard work.

Before L-PRES, we had to travel long distances to fetch water from places like Luggerewo, Tulmi, or Far Kumo, often using motorcycles. Today, thanks to L-PRES and the unwavering support of Governor Muhammadu Inuwa Yahaya, every village now has access to clean and reliable water. What was once a daily struggle has now become a thing of the past.

I call upon all herders and farmers in Gombe State to embrace peace and love one another. The Governor has provided the necessary solutions to our long-standing disputes, and it is now up to us to sustain these efforts for the progress of our dear state.

We fully support this project and will continue to cooperate to ensure its success. With the leadership of Governor Muhammadu Inuwa Yahaya and Professor Usman Bello Abubakar, we are confident that Gombe State will continue to thrive as a model for livestock development and peaceful coexistence.”

**Alhaji Adamu Ardo Jobbo  
(Sarkin Fulanin Akko)**

State has shown this level of concern for herders.

"The establishment of these modern cattle routes, properly marked with government beacons visible from afar, is a historic step towards ending disputes between farmers and herders. This initiative will ensure that herders can move their livestock without encroaching on farmlands, thereby reducing conflicts and promoting peaceful coexistence.

The appointment of Professor Usman Bello Abubakar as the Project Coordinator of L-PRES was a well-deserved

## Manure Extraction & Waste Management at Gombe Abattoir



My name is Shamsuddeeni Morah, and my work here involves extracting manure from slaughtered cows. The world has advanced, and nothing goes to waste anymore when processing livestock. Thanks to L-PRES Gombe, we now extract manure efficiently and turn it into valuable

fertilizer for dry-season farmers in Kaduna and Jos.

Before L-PRES Gombe's intervention, we faced serious challenges. The slaughterhouse was poorly

managed—cow blood and excrement mixed together, making it difficult to get clean and usable manure. We were struggling, but today, everything has changed. With the renovation of the abattoir, the waste is now properly separated. As a result, our production has doubled. In the past, we could only collect about 30 bags of manure, but now, thanks to the modern facilities, we are producing up to 60 bags.

Previously, whenever it rained, the flood would wash away our manure, causing huge losses. But with the improved drainage system and proper waste management, we no longer face such problems. As you can see, we have gathered more manure than ever before! We glorify Almighty God and sincerely appreciate L-PRES Gombe for this transformation. We hope they continue their great work and bring even more improvements to our industry."

**Shamsuddeeni Morah,  
Manure Extraction Specialist**

## The Earth Dam Dredging And Desilting In Wawa-Zange Grazing Reserve



We praise God and are deeply grateful for this project. For over 15 years, we have waited and hoped for this rehabilitation, and today, it has finally become a reality. The restoration of this dam is a great relief to our community, as water scarcity has been a major challenge for us and our livestock.

With the dam now full of water, our animals have a reliable source to drink from, reducing the burden of

traveling long distances in search of water.

We sincerely appreciate L-PRES under the leadership of Dr. Usman Bello Abubakar for making this possible. Their commitment to addressing our needs and transforming our communities is truly commendable. May this initiative continue to bring positive change to many others in need."

**Muhammadu Ahmadu**

## Wawa-Zange Grazing Reserve



This dam had been filled with silt and clay, drastically reducing its water retention capacity. However, with this real commitment to dredging and rehabilitating our water sources, the problem of water scarcity will soon become history in Wawa-Zange and its environs.

Tinubu for bringing the L-PRES Project. The interventions they are undertaking have greatly supported livestock farming.

Last year, around this time, we had only two months before the dam dried up completely. But with the rehabilitation of this dam, there will now be water available all year round. This will sustain our livestock and prevent us from travelling several kilometres in search of water for our animals.

This area serves as both a grazing reserve and an international cattle route, connecting Yobe through Wawa-Zange and extending up to Taraba via Adamawa State.

We are grateful for this intervention and appeal to the government and L-PRES to also consider rehabilitating other dams and ponds to further enhance water availability for livestock."

**Adamu Hassan  
A Village Head And Community Leader**

We thank God and are grateful to the leadership of His Excellency, Governor Muhammadu Inuwa Yahaya, and the Federal Government under President Bola Ahmed



### Wawa-Zange Grazing Reserve

“We were born and raised here in Wawa-Zange. Over the years, we have seen various teams from Abuja, Kaduna, and Jos, but Gombe L-PRES stands out for sensitising us on peace and conflict resolution to promote peaceful coexistence, especially between farmers and herders.

The Gombe State Government, in collaboration with L-PRES, has constituted a Conflict Prevention and

Resolution Committee, of which I am a member under Sarkin Fulanin Wawa-Zange. Alhamdulillah, we are now living peacefully and tolerating one another here in Wawa-Zange.

We are grateful to the Federal Government, the State Government, and the L-PRES Project for their efforts in ensuring peace and stability in our community.”

**Usman Sa'adu**

### L-PRES Training for Veterinary Extension Workers



**Hussaina A. Magaji**  
Gombe Veterinary Clinic

“We thank God for the L-PRES Project, which has provided us with invaluable training on modern livestock management practices. This initiative has broadened our understanding of best practices in animal health, nutrition, and disease prevention, equipping us with the skills needed to enhance livestock productivity.

Through these series of trainings, we have been able to step down the knowledge to our fellow women here in Gombe and in rural villages, empowering them with the tools to improve their livestock-rearing methods. Many of these women

previously relied on traditional methods, but with this newfound knowledge, they are now adopting improved practices that ensure healthier animals and better yields.

We are optimistic that these trainings will significantly enhance their productivity and profitability, transforming livestock keeping from being merely a tradition into a viable and sustainable business. With continued support from L-PRES, we believe that more women will gain financial independence and contribute meaningfully to the livestock sector, ultimately improving their livelihoods and that of their families.”

## GOMBE L-PRES: 2025 WORK PLAN FOR CONTINUED LIVESTOCK SECTOR DEVELOPMENT

The Gombe L-PRES project has outlined an ambitious work plan for 2025, building upon previous successes and introducing new initiatives to further develop the state's livestock sector. The plan focuses on a wide range of areas, demonstrating a comprehensive approach to livestock development.

**Breed Improvement:** Establishment and equipping of a state-of-the-art AI and Breed Multiplication centre for each of the three senatorial zones, which will provide access to superior genetics and boost livestock productivity.



#### Animal Health:

- Equipping three rehabilitated veterinary hospitals in Gombe,

Kaltungo, and Dukku LGAs to enhance animal health service delivery and disease management.

- Rehabilitating/upgrading three existing veterinary clinics in Gombe State (Billiri, Kumo, and Bajoga) to improve access to quality veterinary care for livestock farmers.
- Rehabilitation/upgrading of the Poultry Production Unit (PPU) in Gombe to revitalize poultry farming and increase local production.
- Construction of 33 incinerators for abattoirs and poultry processing facilities (three in

each of the 11 LGAs) to improve sanitation and prevent the spread of diseases.

- Establishment of 22 standard milk collection centres to support the growth of the dairy sector and provide market access for milk producers.

#### Livestock Management:

- Establishment of an Animal Identification and Traceability Control Room to modernize livestock management and enhance disease surveillance.
- Implementation of an animal identification and traceability system to improve livestock tracking and facilitate access to markets.

#### Market Infrastructure:

- Construction of the Gombe International Livestock Market

to create a central hub for livestock trade and boost economic activity.

- Supply of ultra-modern abattoir equipment to improve meat processing standards and ensure food safety.

#### Water Resources:

- Construction/drilling of 11 industrial boreholes (one in each LGA) to provide reliable water sources for livestock and communities.
- Construction/drilling of 33 solar-powered boreholes (three in each LGA) to ensure sustainable access to water, particularly in remote areas.
- **Water Conservation:** Rehabilitation/upgrading of rainwater harvesters (earth dams) to enhance water availability for livestock and irrigation,

especially during dry seasons.

- **Climate Change Mitigation:** Propagation and distribution of seedlings to livestock farmers to promote sustainable land management and mitigate the impact of climate change.
- **Livestock Movement:** Establishment of six resting/control posts at major international pastoralist stock routes to regulate livestock movement, control disease spread, and enhance security.
- This comprehensive plan demonstrates the Gombe L-PRES project's commitment to a multi-faceted approach to livestock sector development, addressing various challenges and opportunities to promote sustainable growth and improve livelihoods in Gombe State.

## Partners in Development



**USAID**  
FROM THE AMERICAN PEOPLE



**Save the Children**

The Gombe State Government expresses its deep appreciation to Mercy Corps and its esteemed development partners—USAID, Feed the Future Nigeria Rural Resilience Activity, IFDC, and Save the Children—for their invaluable contributions towards transforming the Wawa-Zange Grazing Reserve into a hub of sustainable livestock production and economic prosperity.

Through their unwavering support,

expertise, and strategic interventions, these organisations have played a crucial role in conducting feasibility assessments, facilitating key investments, and strengthening resilience in the livestock sector.

We particularly commend the leadership and dedication of the Mercy Corps team, including Chief of Party, Margarita Ravi Aswani; Deputy Chief of Party, John Rachkara; and Senior Intervention Officer, Emeka Njoku, whose

guidance and technical input have been instrumental in advancing this vision.

Under the visionary leadership of His Excellency, Governor Muhammadu Inuwa Yahaya (Dan Majen Gombe), these partnerships continue to drive meaningful progress, creating a modernised, productive, and resilient livestock sector that benefits communities and strengthens the economy of Gombe State.

## ALGON Chair Hails Gombe L-PRES for Advancing Governor Inuwa's Vision for Livestock Development ...Pledges Stronger Collaboration for Sustainable Transformation

The Gombe State Livestock Productivity and Resilience Support (L-PRES) Project has received rain of encomiums from the Chairman of the Association of Local Governments of Nigeria (ALGON), Gombe State Chapter, and Chairman of Gombe Local Government, Barrister Sani Ahmad Haruna.

The commendation came during a courtesy visit by the Chairman and his council members to the L-PRES Project Coordination Office in Gombe, where discussions focused on strengthening collaboration for the effective implementation of the project across the 11 Local Government Areas (LGAs) of the state.

Welcoming the delegation, the State Project Coordinator, Professor Usman Bello Abubakar, expressed gratitude for the visit, describing it as a significant step towards fostering synergy between L-PRES and local government authorities. He reiterated the project's commitment to working closely with LGAs to ensure the successful execution of interventions aimed at modernizing the livestock sector.

Professor Abubakar noted that Barrister Sani Haruna has been a strong ally of L-PRES, actively supporting its activities and playing a key role in ensuring its success in Gombe LGA and beyond.

He commended the Governor of Gombe State, Muhammadu Inuwa Yahaya, for his visionary leadership and for appointing competent individuals to drive governance and development efforts in the state.

Highlighting L-PRES' impact in Gombe LGA, Professor Abubakar pointed to several key projects, including the construction of the ultramodern abattoir, whose bidding

process has been completed and the contract awarded.

"This facility holds enormous potential for job creation, economic growth, and development. It will also significantly reduce the risks associated with transporting live animals to distant markets," he stated.

He further commended Governor Inuwa Yahaya's efforts in securing 41 hectares of land for the establishment of an International Livestock Market, an Ultramodern Abattoir, a Tannery, and other modern facilities—a project that will position Gombe as a leader in livestock commerce in Nigeria.



Additionally, he informed the delegation about L-PRES' plan to establish a digitalized international livestock market within the abattoir complex with modern facilities.

Professor Abubakar also revealed plans for a dairy factory and milk collection centers within the state capital, aimed at boosting dairy production and profitability for local farmers, thereby making Gombe a hub for high-quality meat, dairy, and leather exports.

The L-PRES Coordinator reaffirmed the project's openness to collaboration with local governments, emphasizing that with the continued support of ALGON and all LGA Chairmen, the vision for livestock transformation in Gombe would be fully realized.

He also briefed the delegation on Governor Inuwa Yahaya's recent approval for the employment of veterinary professionals to strengthen animal health services across the state, ensuring quality veterinary care reaches rural communities.

In his remarks, ALGON Chairman Barrister Sani Ahmad Haruna lauded Professor Usman Bello Abubakar for his leadership and the unprecedented success recorded by L-PRES in such a short time.

"We have seen remarkable results, and I am confident that more achievements will follow. I appreciate the strong leadership and dedication within the L-PRES team. This project is one of the most impactful initiatives in Gombe State," he stated.

"The initiatives and interventions of L-PRES will not only boost local government revenue but also harness the unique economic potentials of each LGA based on their comparative advantages," he noted.

Barrister Sani assured that LGAs remain open to collaboration and pledged full support to L-PRES, stating: "I foresee a brighter future for Gombe State with L-PRES, and together, we will actualize this vision." Expressing optimism about the future, he suggested that future meetings should involve other LGA Chairmen to deepen engagement and identify more areas for collaboration in project implementation.

"Our visit today is to strengthen our relationship with L-PRES, follow up on ongoing projects in our respective LGAs, and explore more areas of synergy to support our people and advance Governor Inuwa Yahaya's mission for livestock transformation," he concluded.

# PHOTO SPLASH



*The Gombe State L-PRES Project Coordinator during the L-PRES Media Workshop held in Abuja on September 30, 2024.*



*Prof. U.B. Abubakar conducting the Hon. Comm. for Agriculture, Animal Husbandry, and Cooperatives, Dr. Barnabas Malle, on a tour of the completed Disease Surveillance Laboratory and Cold Chain Facility.*



*His Excellency, the Governor of Gombe State, Muhammadu Inuwa Yahaya, CON, in a warm handshake with the Emir of Pindiga, HRH Muhammadu Seyoji Ahmad, during the flag-off of the 2024 Annual Livestock Vaccination Campaign.*



*Gombe L-PRES PC, conducting the Hon. Comm. Min. of Agriculture, Animal Husbandry and Cooperatives, round the completed disease surveillance laboratory and cold chain facility*



*A solar-powered borehole facility installed at the renovated Gombe Abattoir by the Gombe L-PRES Project.*



*Rain Collection Points (Earth Dam rehabilitated and dredged in Wawa-Zange by Gombe L-PRES Project.*



*Gombe L-PRES Coordinator, Prof. U.B. Abubakar, in discussion with Gombe ACREsAL Project Coordinator, Dr. Sani Adamu Jauro, during a meeting with the Chinese Juncao Technology Center to promote animal feed production and combat desertification.*



*Prof. U.B. Abubakar (middle), Prof. Junaidu Kabir (right), and Dr. Barnabas Malle (left) exchanging pleasantries shortly after the opening session of a training program for 45 One-Health Officers.*



*His Excellency, Muhammadu Inuwa Yahaya, CON, with SPC Prof. U.B. Abubakar during the flag-off of the 2024 Livestock Vaccination Campaign.*



*Director General of GOGIS, Dr. Kabiru Usman, with his technical team, including staff from the State Surveyor General's Office, during an assessment visit to select a suitable site for the International Livestock Market and Ultramodern Abattoir in Gombe.*



*Dukku Veterinary Clinic before and after renovation.*



*SPC Prof. U.B. Abubakar inspecting facilities at Wajari Farmer Field School for the upgrade of the facility.*



*Handing over of the site to the contractor for the renovation and upgrade of Gombe Veterinary Clinic to a hospital by L-PRES Project Coordinator, Prof. U.B. Abubakar.*



*During the flag-off of the livestock vaccination campaign, a collaborative exercise between Gombe L-PRES and Gombe Local Government.*



*Inauguration and training of State and LGA Committees on Conflict Mediation, Prevention, and Management between Farmers and Herders in Gombe State.*



His Excellency, Governor Muhammadu Inuwa Yahaya, CON, observing a dairy farm during a special visit to Morocco.



In a warm handshake with Yusuf Bachama, Chairman of the Association of NGOs in Gombe State, during a courtesy visit to the L-PRES Coordination Office.



The National Coordinator of L-PRES, the State Coordinator, and members of the SPIU during a courtesy visit to the SSG, Prof. Ibrahim Abubakar Njodi.



Cross-section of Gombe L-PRES SPIU staff during training on communication.



Kumo Abattoir before and after rehabilitation.



Gombe State L-PRES Project Coordinator with the leadership of Gombe State Livestock Associations.



State Coordinator with the leadership of Nigerian Veterinary Medical Association during a courtesy visit to his office.



Agro-Climatic Resilience  
In Semi-Arid Landscapes

ACReSAL



**Dr. Sani Adamu Jauro,**  
Project Coordinator, Gombe State ACRReSAL

# Keep the Environment Green, **avoid bush burning**



**Reduce fuel:** Mow the grass and rake up leaves. You can also slash or graze paddocks to reduce fuel.



**Plant fire-resistant plants:** Some plants can absorb heat from a fire without combusting.



**Keep your area clean:** Remove debris from your gutters and roofs.



**Dispose of matches and cigarettes properly:** Put them in a closed container or dip them in water before throwing them away.



**Don't use fireworks near vegetation:** Fireworks and sparklers can start fires.



**Never leave a fire unattended:** Someone should always monitor a campfire, bonfire, or burn pile.



**Check the weather:** Avoid activities that involve fire or sparks when it's hot, dry, and windy.



Put off fire properly after Wild honey harvest

# WHAT IS BIRD FLU?

**B**ird Flu, also known as Avian Influenza, is a viral disease that affects birds and can sometimes infect humans. Signs of **Bird Flu in Birds:**

- Sudden death in high number without obvious cause
- Swelling of the head, eyes, and neck
- Loss of appetite and drop in egg production
- Coughing, sneezing, and breathing difficulties

## How Does Bird Flu Spread?

- Direct contact with infected birds
- Contact with bird droppings or secretions
- Contaminated feed, water, or equipment

## Protect Your Birds:

- Keep your poultry away from wild birds
- Regularly clean and disinfect bird cages, equipment, and surroundings
- Do not buy or sell sick birds



- Report any sudden or unusual bird deaths to local veterinary authorities

## Protect Yourself and Your Family:

- Avoid handling sick or dead birds
- If you must handle birds, wear gloves and wash your hands thoroughly with soap and water afterward
- Cook poultry and eggs thoroughly before eating
- Seek medical attention if you experience flu-like symptoms after contact with birds

## Report Suspected Cases:

- If you notice any signs of Bird Flu in your poultry or wild birds, contact your any Veterinary office immediately. Early reporting can help prevent the spread of the disease.

# WHAT IS ANTHRAX?

**A**nthrax is a serious disease caused by bacteria that can affect animals like cattle, sheep, goats, and can also infect humans.

It's caused by the bacterium *Bacillus anthracis*, which produces spores that can survive in soil for years. Although no outbreak was reported in Gombe state, an outbreak was confirmed in Zamfara state.

## Signs of Anthrax in Animals:

- Sudden death without prior signs of illness
- Bleeding from openings like the nose, mouth, or anus
- Swelling under the skin
- Difficulty breathing

## Signs of Anthrax in Humans:

- Skin Infection: Painless sores with a black center
- Respiratory Infection: Fever,

cough, chest discomfort

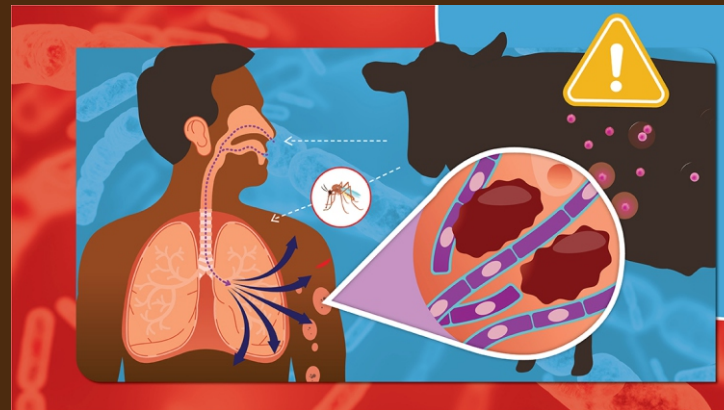
- Digestive Infection: Nausea, vomiting, stomach pain

## How Does Anthrax Spread?

- Direct contact with infected animals or their products
- Inhalation of spores from contaminated animal products
- Consumption of undercooked meat from infected animals

## Protect Your Animals:

- Vaccinate livestock against anthrax
- Do not move or open carcasses of animals that died suddenly
- Report any sudden animal deaths to veterinary authorities



## Protect Yourself and Your Family:

- Avoid handling sick or dead animals
- Wear protective clothing when dealing with livestock
- Cook meat thoroughly before consumption
- Seek medical attention if you develop symptoms after contact with animals

**Report Suspected Cases:** If you notice any signs of anthrax in animals or humans, contact any Veterinary or health authorities immediately. Early reporting can help prevent the spread of the disease. Together, we can protect our livestock and our health



# TRANSFORMING Gombe's Livestock Sector for Prosperity

“Our vision is to modernise livestock farming, create economic opportunities, and ensure food security for our people. The ultramodern abattoir and international livestock market will position Gombe as a hub for livestock trade, benefiting farmers, herders, and the entire value chain.”

■ His Excellency,  
**Muhammadu Inuwa Yahaya, CON**  
Executive Governor, Gombe State

**U**nder Governor Muhammadu Inuwa Yahaya’s visionary leadership, Gombe State is redefining the livestock sector. The establishment of the Ultramodern Abattoir and International Livestock Market marks a significant milestone in agricultural transformation, offering improved facilities for hygienic meat processing, value addition, and global trade opportunities.

Through strategic initiatives like the Gombe L-PRES Project, the state government is empowering livestock farmers, enhancing infrastructure, and fostering peaceful coexistence between farmers and herders. With unwavering commitment, Governor Inuwa Yahaya is laying the foundation for a sustainable, profitable, and resilient livestock industry in Gombe State.

*Model of Gombe Ultramodern Abattoir to be constructed by Gombe L-PRES Project in collaboration with Gombe State Government*



🌐 <https://lpres.gm.gov.ng> 📘 <https://www.facebook.com/gombelpres> 🐦 <https://x.com/lpresgombe> 📺 <https://www.tiktok.com/@gombelpres>  
📷 <https://www.instagram.com/gombelpres> ✉️ [gombe@lpresnigeria.gov.ng](mailto:gombe@lpresnigeria.gov.ng)

📍 GSADP Quarters, Opposite Buhari Housing Estate Gombe.

